



Certificate of Analysis

QA SAMPLE - INFORMATIONAL ONLY

1 of 3

ICAL ID: 20210922-012
Sample: CA210922-010-027
Peach Mango Blister Pack
Strain: Peach Mango Blister Pack
Category: Ingestible

Batch#: _____
Primary Size: _____
Batch Size: _____
Collected: 09/23/2021; Received: 09/23/2021
Completed: 09/23/2021

Lic. #

Moisture NT Water Activity NT	$\Delta 9$ -THC 108.10 mg/unit 10.81 mg/serving	CBD 0.47 mg/unit 0.05 mg/serving	Total Cannabinoids 116.42 mg/unit 11.64 mg/serving	Total Terpenes NT
--	--	---	---	----------------------

Summary	SOP Used	Date Tested	Complete
Batch	POT-PREP-002	09/22/2021	Complete
Cannabinoids			Complete



Scan to see results

Cannabinoid Profile

1 Unit = package, 37.35 g. 10 serving(s) per package.

Analyte	LOQ	LOD	%	mg/g	mg/unit	Analyte	LOQ	LOD	%	mg/g	mg/unit
THCa	0.48	0.16	ND	ND	ND	CBDV	0.17	0.01	ND	ND	ND
$\Delta 9$ -THC	0.17	0.04	0.289	2.89	108.10	CBN	0.17	0.02	0.004	0.04	1.46
$\Delta 8$ -THC	0.17	0.05	ND	ND	ND	CBGa	0.17	0.06	ND	ND	ND
THCV	0.17	0.02	0.003	0.03	1.12	CBG	0.17	0.02	0.006	0.06	2.32
CBDa	0.18	0.06	ND	ND	ND	CBC	0.28	0.09	0.008	0.08	2.97
CBD	0.17	0.03	0.001	0.01	0.47	Total			0.312	3.12	116.42

Total THC=THCa * 0.877 + $\Delta 9$ -THC; Total CBD = CBDa * 0.877 + CBD. NR= Not Reported, ND= Not Detected. Potency is reported on a dry weight basis. Instrumentation and analysis SOPs used: Cannabinoids:UHPLC-DAD(POT-INST-005),Moisture:Moisture Analyzer(MOISTURE-001),Water Activity:Water Activity Meter(WA-INST-002), Foreign Material:Microscope(FOREIGN-001). Density measured at 19-24 °C. Water Activity measured at 0-90% RH. All QA submitted by the client, All CA State Compliance sampled using SAMPL-SOP-001.

Terpene Profile

Analyte	LOQ	LOD	%	mg/g	Analyte	LOQ	LOD	%	mg/g
---------	-----	-----	---	------	---------	-----	-----	---	------

NR= Not Reported (no analysis was performed), ND= Not Detected (the concentration is less than the Limit of Detection (LOD)). Analytical instrumentation used: HS-GC-MS; samples analyzed according to SOP TERP-INST-003.



Infinite Chemical Analysis Labs
8380 Miramar Mall #102
San Diego, CA
(858) 623-2740
www.infiniteCAL.com
Lic# C8-0000019-LIC

Josh M Swider

Josh Swider
Lab Director, Managing Partner
09/23/2021

Confident Cannabis
All Rights Reserved
support@confidentcannabis.com
(866) 506-5866
www.confidentcannabis.com



This product has been tested by Infinite Chemical Analysis, LLC using valid testing methodologies and a quality system as required by state law. All LQC samples were performed and met the prescribed acceptance criteria in 16 CCR section 5730, pursuant to 16 CCR section 5726(e)(13). Values reported relate only to the product tested. Infinite Chemical Analysis, LLC makes no claims as to the efficacy, safety or other risks associated with any detected or non-detected levels of any compounds reported herein. This Certificate shall not be reproduced except in full, without the written approval of Infinite Chemical Analysis, LLC.



Certificate of Analysis

QA SAMPLE - INFORMATIONAL ONLY

2 of 3

ICAL ID: 20210922-012
Sample: CA210922-010-027
Peach Mango Blister Pack
Strain: Peach Mango Blister Pack
Category: Ingestible

Batch#: _____
Primary Size: _____
Batch Size: _____
Collected: 09/23/2021; Received: 09/23/2021
Completed: 09/23/2021

Lic. # _____

Residual Solvent Analysis

Category 1	LOQ	LOD	Limit	Status	Category 2	LOQ	LOD	Limit	Status	Category 2	LOQ	LOD	Limit	Status
------------	-----	-----	-------	--------	------------	-----	-----	-------	--------	------------	-----	-----	-------	--------

NR= Not Reported (no analysis was performed), ND= Not Detected (the concentration is less then the Limit of Detection (LOD)). Analytical instrumentation used: HS-GC-MS; samples analyzed according to SOP RS-INST-003.

Heavy Metal Screening

	LOQ	LOD	Limit	Status
--	-----	-----	-------	--------

NR= Not Reported (no analysis was performed), ND= Not Detected (the concentration is less then the Limit of Detection (LOD)). Analytical instrumentation used: ICP-MS; samples analyzed according to SOP HM-INST-003.

Microbiological Screening

	Result	Status
--	--------	--------

ND=Not Detected. Analytical instrumentation used:qPCR; samples analyzed according to SOP MICRO-INST-001.



Infinite Chemical Analysis Labs
8380 Miramar Mall #102
San Diego, CA
(858) 623-2740
www.infiniteCAL.com
Lic# C8-0000019-LIC

Josh M Swider

Josh Swider
Lab Director, Managing Partner
09/23/2021

Confident Cannabis
All Rights Reserved
support@confidentcannabis.com
(866) 506-5866
www.confidentcannabis.com



This product has been tested by Infinite Chemical Analysis, LLC using valid testing methodologies and a quality system as required by state law. All LQC samples were performed and met the prescribed acceptance criteria in 16 CCR section 5730, pursuant to 16 CCR section 5726(e)(13). Values reported relate only to the product tested. Infinite Chemical Analysis, LLC makes no claims as to the efficacy, safety or other risks associated with any detected or non-detected levels of any compounds reported herein. This Certificate shall not be reproduced except in full, without the written approval of Infinite Chemical Analysis, LLC.



Certificate of Analysis

QA SAMPLE - INFORMATIONAL ONLY

3 of 3

ICAL ID: 20210922-012
Sample: CA210922-010-027
Peach Mango Blister Pack
Strain: Peach Mango Blister Pack
Category: Ingestible

Batch#: _____
Primary Size: _____
Batch Size: _____
Collected: 09/23/2021; Received: 09/23/2021
Completed: 09/23/2021

Lic. # _____

Chemical Residue Screening

Category 1	LOQ	LOD	Status	Mycotoxins	LOQ	LOD	Limit	Status
------------	-----	-----	--------	------------	-----	-----	-------	--------

Category 2	LOQ	LOD	Limit	Status	Category 2	LOQ	LOD	Limit	Status
------------	-----	-----	-------	--------	------------	-----	-----	-------	--------

Other Analyte(s):

NR= Not Reported (no analysis was performed), ND= Not Detected (the concentration is less then the Limit of Detection (LOD)). Analytical instrumentation used: LC-MS-MS & GC-MS-MS; samples analyzed according to SOPs PESTMYCO-LC-INST-004 and PEST-GC-INST-003.



Infinite Chemical Analysis Labs
8380 Miramar Mall #102
San Diego, CA
(858) 623-2740
www.infiniteCAL.com
Lic# C8-0000019-LIC

Josh M Swider

Josh Swider
Lab Director, Managing Partner
09/23/2021

Confident Cannabis
All Rights Reserved
support@confidentcannabis.com
(866) 506-5866
www.confidentcannabis.com



This product has been tested by Infinite Chemical Analysis, LLC using valid testing methodologies and a quality system as required by state law. All LQC samples were performed and met the prescribed acceptance criteria in 16 CCR section 5730, pursuant to 16 CCR section 5726(e)(13). Values reported relate only to the product tested. Infinite Chemical Analysis, LLC makes no claims as to the efficacy, safety or other risks associated with any detected or non-detected levels of any compounds reported herein. This Certificate shall not be reproduced except in full, without the written approval of Infinite Chemical Analysis, LLC.



Certificate of Analysis

QA SAMPLE - INFORMATIONAL ONLY

1 of 3

ICAL ID: 20211026-042
Sample: CA211026-002-004
Sour Blueberry Dome Gummy
Strain: Sour Blueberry Dome Gummy
Category: Ingestible

Pacific Manufacturing and Design, LLC
Lic. #
9520 Black Mountain Rd
SAN DIEGO, CA 92126
Lic. #

Batch#:
Primary Size:
Batch Size:
Collected: 10/27/2021; Received: 10/27/2021
Completed: 10/27/2021

Moisture NT Water Activity NT	Δ 9-THC 103.22 mg/unit 10.32 mg/serving	CBD 0.23 mg/unit 0.02 mg/serving	Total Cannabinoids 110.47 mg/unit 11.05 mg/serving	Total Terpenes NT
--	---	---	---	----------------------

Summary	SOP Used	Date Tested	Complete
Batch	POT-PREP-002	10/26/2021	Complete



Scan to see results

Cannabinoid Profile

1 Unit = package, 42.17 g. 10 serving(s) per package.

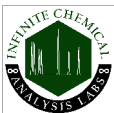
Analyte	LOQ	LOD	%	mg/g	mg/unit	Analyte	LOQ	LOD	%	mg/g	mg/unit
THCa	0.54	0.18	ND	ND	ND	CBDV	0.19	0.02	ND	ND	ND
Δ 9-THC	0.19	0.04	0.245	2.45	103.22	CBN	0.19	0.02	0.003	0.03	1.39
Δ 8-THC	0.19	0.06	0.002	0.02	0.80	CBGa	0.19	0.06	ND	ND	ND
THCV	0.19	0.03	0.001	0.01	0.42	CBG	0.19	0.02	0.008	0.08	3.54
CBDa	0.21	0.07	ND	ND	ND	CBC	0.32	0.11	0.002	0.02	0.88
CBD	0.19	0.03	0.001	0.01	0.23	Total			0.262	2.62	110.47

Units for THC in banner represent units for LOQ and LOD for all analytes. Total THC=THCa * 0.877 + d9-THC; Total CBD = CBDa * 0.877 + CBD. NR= Not Reported, ND= Not Detected. Potency is reported on a dry weight basis. Instrumentation and analysis SOPs used: Cannabinoids:UHPLC-DAD(POT-INST-005),Moisture:Moisture Analyzer(MOISTURE-001),Water Activity:Water Activity Meter(WA-INST-002), Foreign Material:Microscope(FOREIGN-001). Density measured at 19-24 °C, Water Activity measured at 0-90% RH. All QA submitted by the client, All CA State Compliance sampled using SAMPL-SOP-001.

Terpene Profile

Analyte	LOQ	LOD	%	mg/g	Analyte	LOQ	LOD	%	mg/g
---------	-----	-----	---	------	---------	-----	-----	---	------

NR= Not Reported (no analysis was performed), ND= Not Detected (the concentration is less than the Limit of Detection (LOD)). Analytical instrumentation used: HS-GC-MS; samples analyzed according to SOP TERP-INST-003.



Infinite Chemical Analysis Labs
8380 Miramar Mall #102
San Diego, CA
(858) 623-2740
www.infiniteCAL.com
Lic# C8-0000019-LIC

Josh M Swider

Josh Swider
Lab Director, Managing Partner
10/27/2021

Confident Cannabis
All Rights Reserved
support@confidentcannabis.com
(866) 506-5866
www.confidentcannabis.com



This product has been tested by Infinite Chemical Analysis, LLC using valid testing methodologies and a quality system as required by state law. All LQC samples were performed and met the prescribed acceptance criteria in 16 CCR section 5730, pursuant to 16 CCR section 5726(e)(13). Values reported relate only to the product tested. Infinite Chemical Analysis, LLC makes no claims as to the efficacy, safety or other risks associated with any detected or non-detected levels of any compounds reported herein. This Certificate shall not be reproduced except in full, without the written approval of Infinite Chemical Analysis, LLC.



Certificate of Analysis

QA SAMPLE - INFORMATIONAL ONLY

2 of 3

ICAL ID: 20211026-042
Sample: CA211026-002-004
Sour Blueberry Dome Gummy
Strain: Sour Blueberry Dome Gummy
Category: Ingestible

Pacific Manufacturing and Design, LLC
Lic. #
9520 Black Mountain Rd
SAN DIEGO, CA 92126

Lic. #

Batch#: _____
Primary Size: _____
Batch Size: _____
Collected: 10/27/2021; Received: 10/27/2021
Completed: 10/27/2021

Residual Solvent Analysis

Category 1	LOQ	LOD	Limit	Status	Category 2	LOQ	LOD	Limit	Status	Category 2	LOQ	LOD	Limit	Status
------------	-----	-----	-------	--------	------------	-----	-----	-------	--------	------------	-----	-----	-------	--------

NR= Not Reported (no analysis was performed), ND= Not Detected (the concentration is less then the Limit of Detection (LOD)). Analytical instrumentation used: HS-GC-MS; samples analyzed according to SOP RS-INST-003.

Heavy Metal Screening

	LOQ	LOD	Limit	Status
--	-----	-----	-------	--------

NR= Not Reported (no analysis was performed), ND= Not Detected (the concentration is less then the Limit of Detection (LOD)). Analytical instrumentation used: ICP-MS; samples analyzed according to SOP HM-INST-003.

Microbiological Screening

	Result	Status
--	--------	--------

ND=Not Detected. Analytical instrumentation used:qPCR; samples analyzed according to SOP MICRO-INST-001.



Infinite Chemical Analysis Labs
8380 Miramar Mall #102
San Diego, CA
(858) 623-2740
www.infiniteCAL.com
Lic# C8-0000019-LIC

Josh M Swider

Josh Swider
Lab Director, Managing Partner
10/27/2021

Confident Cannabis
All Rights Reserved
support@confidentcannabis.com
(866) 506-5866
www.confidentcannabis.com



This product has been tested by Infinite Chemical Analysis, LLC using valid testing methodologies and a quality system as required by state law. All LQC samples were performed and met the prescribed acceptance criteria in 16 CCR section 5730, pursuant to 16 CCR section 5726(e)(13). Values reported relate only to the product tested. Infinite Chemical Analysis, LLC makes no claims as to the efficacy, safety or other risks associated with any detected or non-detected levels of any compounds reported herein. This Certificate shall not be reproduced except in full, without the written approval of Infinite Chemical Analysis, LLC.



Certificate of Analysis

QA SAMPLE - INFORMATIONAL ONLY

3 of 3

ICAL ID: 20211026-042
Sample: CA211026-002-004
Sour Blueberry Dome Gummy
Strain: Sour Blueberry Dome Gummy
Category: Ingestible

Pacific Manufacturing and Design, LLC
Lic. #
9520 Black Mountain Rd
SAN DIEGO, CA 92126

Lic. #

Batch#: _____
Primary Size: _____
Batch Size: _____
Collected: 10/27/2021; Received: 10/27/2021
Completed: 10/27/2021

Chemical Residue Screening

Category 1	LOQ	LOD	Status	Mycotoxins	LOQ	LOD	Limit	Status
------------	-----	-----	--------	------------	-----	-----	-------	--------

Category 2	LOQ	LOD	Limit	Status	Category 2	LOQ	LOD	Limit	Status
------------	-----	-----	-------	--------	------------	-----	-----	-------	--------

Other Analyte(s):

NR= Not Reported (no analysis was performed), ND= Not Detected (the concentration is less then the Limit of Detection (LOD)). Analytical instrumentation used: LC-MS-MS & GC-MS-MS; samples analyzed according to SOPs PESTMYCO-LC-INST-004 and PEST-GC-INST-003.



Infinite Chemical Analysis Labs
8380 Miramar Mall #102
San Diego, CA
(858) 623-2740
www.infiniteCAL.com
Lic# C8-0000019-LIC

Josh M Swider

Josh Swider
Lab Director, Managing Partner
10/27/2021

Confident Cannabis
All Rights Reserved
support@confidentcannabis.com
(866) 506-5866
www.confidentcannabis.com



This product has been tested by Infinite Chemical Analysis, LLC using valid testing methodologies and a quality system as required by state law. All LQC samples were performed and met the prescribed acceptance criteria in 16 CCR section 5730, pursuant to 16 CCR section 5726(e)(13). Values reported relate only to the product tested. Infinite Chemical Analysis, LLC makes no claims as to the efficacy, safety or other risks associated with any detected or non-detected levels of any compounds reported herein. This Certificate shall not be reproduced except in full, without the written approval of Infinite Chemical Analysis, LLC.



Certificate of Analysis

QA SAMPLE - INFORMATIONAL ONLY

1 of 3

ICAL ID: 20211026-043
Sample: CA211026-002-005
Lemon Dome Gummy
Strain: Lemon Dome Gummy
Category: Ingestible

Pacific Manufacturing and Design, LLC
Lic. #
9520 Black Mountain Rd
SAN DIEGO, CA 92126

Lic. #

Batch#:
Primary Size:
Batch Size:
Collected: 10/27/2021; Received: 10/27/2021
Completed: 10/27/2021

Moisture NT Water Activity NT	Δ 9-THC 99.50 mg/unit 9.95 mg/serving	CBD 0.23 mg/unit 0.02 mg/serving	Total Cannabinoids 106.44 mg/unit 10.64 mg/serving	Total Terpenes NT
--	---	---	---	----------------------

Summary	SOP Used	Date Tested	Complete
Batch	POT-PREP-002	10/26/2021	Complete



Scan to see results

Cannabinoid Profile

1 Unit = package, 43.89 g. 10 serving(s) per package.

Analyte	LOQ	LOD	%	mg/g	mg/unit	Analyte	LOQ	LOD	%	mg/g	mg/unit
THCa	0.56	0.19	ND	ND	ND	CBDV	0.20	0.02	ND	ND	ND
Δ 9-THC	0.20	0.04	0.227	2.27	99.50	CBN	0.20	0.02	0.003	0.03	1.32
Δ 8-THC	0.20	0.06	0.002	0.02	0.75	CBGa	0.20	0.07	ND	ND	ND
THCV	0.20	0.03	0.001	0.01	0.44	CBG	0.20	0.02	0.008	0.08	3.38
CBDa	0.22	0.07	ND	ND	ND	CBC	0.33	0.11	0.002	0.02	0.83
CBD	0.20	0.04	0.001	0.01	0.23	Total			0.243	2.43	106.44

Units for THC in banner represent units for LOQ and LOD for all analytes. Total THC=THCa * 0.877 + d9-THC; Total CBD = CBDa * 0.877 + CBD. NR= Not Reported, ND= Not Detected. Potency is reported on a dry weight basis. Instrumentation and analysis SOPs used: Cannabinoids:UHPLC-DAD(POT-INST-005),Moisture:Moisture Analyzer(MOISTURE-001),Water Activity:Water Activity Meter(WA-INST-002), Foreign Material:Microscope(FOREIGN-001). Density measured at 19-24 °C, Water Activity measured at 0-90% RH. All QA submitted by the client, All CA State Compliance sampled using SAMPL-SOP-001.

Terpene Profile

Analyte	LOQ	LOD	%	mg/g	Analyte	LOQ	LOD	%	mg/g
---------	-----	-----	---	------	---------	-----	-----	---	------

NR= Not Reported (no analysis was performed), ND= Not Detected (the concentration is less than the Limit of Detection (LOD)). Analytical instrumentation used: HS-GC-MS; samples analyzed according to SOP TERP-INST-003.



Infinite Chemical Analysis Labs
8380 Miramar Mall #102
San Diego, CA
(858) 623-2740
www.infiniteCAL.com
Lic# C8-0000019-LIC

Josh M Swider

Josh Swider
Lab Director, Managing Partner
10/27/2021

Confident Cannabis
All Rights Reserved
support@confidentcannabis.com
(866) 506-5866
www.confidentcannabis.com



This product has been tested by Infinite Chemical Analysis, LLC using valid testing methodologies and a quality system as required by state law. All LQC samples were performed and met the prescribed acceptance criteria in 16 CCR section 5730, pursuant to 16 CCR section 5726(e)(13). Values reported relate only to the product tested. Infinite Chemical Analysis, LLC makes no claims as to the efficacy, safety or other risks associated with any detected or non-detected levels of any compounds reported herein. This Certificate shall not be reproduced except in full, without the written approval of Infinite Chemical Analysis, LLC.



Certificate of Analysis

QA SAMPLE - INFORMATIONAL ONLY

2 of 3

ICAL ID: 20211026-043
Sample: CA211026-002-005
Lemon Dome Gummy
Strain: Lemon Dome Gummy
Category: Ingestible

Pacific Manufacturing and Design, LLC
Lic. #
9520 Black Mountain Rd
SAN DIEGO, CA 92126

Lic. #

Batch#:
Primary Size:
Batch Size:
Collected: 10/27/2021; Received: 10/27/2021
Completed: 10/27/2021

Residual Solvent Analysis

Category 1	LOQ	LOD	Limit	Status	Category 2	LOQ	LOD	Limit	Status	Category 2	LOQ	LOD	Limit	Status
------------	-----	-----	-------	--------	------------	-----	-----	-------	--------	------------	-----	-----	-------	--------

NR= Not Reported (no analysis was performed), ND= Not Detected (the concentration is less then the Limit of Detection (LOD)). Analytical instrumentation used: HS-GC-MS; samples analyzed according to SOP RS-INST-003.

Heavy Metal Screening

LOQ	LOD	Limit	Status
-----	-----	-------	--------

NR= Not Reported (no analysis was performed), ND= Not Detected (the concentration is less then the Limit of Detection (LOD)). Analytical instrumentation used: ICP-MS; samples analyzed according to SOP HM-INST-003.

Microbiological Screening

Result	Status
--------	--------

ND=Not Detected. Analytical instrumentation used:qPCR; samples analyzed according to SOP MICRO-INST-001.



Infinite Chemical Analysis Labs
8380 Miramar Mall #102
San Diego, CA
(858) 623-2740
www.infiniteCAL.com
Lic# C8-0000019-LIC

Josh M Swider

Josh Swider
Lab Director, Managing Partner
10/27/2021

Confident Cannabis
All Rights Reserved
support@confidentcannabis.com
(866) 506-5866
www.confidentcannabis.com



This product has been tested by Infinite Chemical Analysis, LLC using valid testing methodologies and a quality system as required by state law. All LQC samples were performed and met the prescribed acceptance criteria in 16 CCR section 5730, pursuant to 16 CCR section 5726(e)(13). Values reported relate only to the product tested. Infinite Chemical Analysis, LLC makes no claims as to the efficacy, safety or other risks associated with any detected or non-detected levels of any compounds reported herein. This Certificate shall not be reproduced except in full, without the written approval of Infinite Chemical Analysis, LLC.



Certificate of Analysis

QA SAMPLE - INFORMATIONAL ONLY

3 of 3

ICAL ID: 20211026-043
Sample: CA211026-002-005
Lemon Dome Gummy
Strain: Lemon Dome Gummy
Category: Ingestible

Pacific Manufacturing and Design, LLC
Lic. #
9520 Black Mountain Rd
SAN DIEGO, CA 92126

Lic. #

Batch#: _____
Primary Size: _____
Batch Size: _____
Collected: 10/27/2021; Received: 10/27/2021
Completed: 10/27/2021

Chemical Residue Screening

Category 1	LOQ	LOD	Status	Mycotoxins	LOQ	LOD	Limit	Status
------------	-----	-----	--------	------------	-----	-----	-------	--------

Category 2	LOQ	LOD	Limit	Status	Category 2	LOQ	LOD	Limit	Status
------------	-----	-----	-------	--------	------------	-----	-----	-------	--------

Other Analyte(s):

NR= Not Reported (no analysis was performed), ND= Not Detected (the concentration is less then the Limit of Detection (LOD)). Analytical instrumentation used: LC-MS-MS & GC-MS-MS; samples analyzed according to SOPs PESTMYCO-LC-INST-004 and PEST-GC-INST-003.



Infinite Chemical Analysis Labs
8380 Miramar Mall #102
San Diego, CA
(858) 623-2740
www.infiniteCAL.com
Lic# C8-0000019-LIC

Josh M Swider

Josh Swider
Lab Director, Managing Partner
10/27/2021

Confident Cannabis
All Rights Reserved
support@confidentcannabis.com
(866) 506-5866
www.confidentcannabis.com



This product has been tested by Infinite Chemical Analysis, LLC using valid testing methodologies and a quality system as required by state law. All LQC samples were performed and met the prescribed acceptance criteria in 16 CCR section 5730, pursuant to 16 CCR section 5726(e)(13). Values reported relate only to the product tested. Infinite Chemical Analysis, LLC makes no claims as to the efficacy, safety or other risks associated with any detected or non-detected levels of any compounds reported herein. This Certificate shall not be reproduced except in full, without the written approval of Infinite Chemical Analysis, LLC.



Certificate of Analysis

QA SAMPLE - INFORMATIONAL ONLY

1 of 3

ICAL ID: 20211026-041
Sample: CA211026-002-003
Dragonfruit Coconut Dome Gummy
Strain: Dragonfruit Coconut Dome Gummy
Category: Ingestible

Pacific Manufacturing and Design, LLC
Lic. #
9520 Black Mountain Rd
SAN DIEGO, CA 92126

Lic. #

Batch#:
Primary Size:
Batch Size:
Collected: 10/27/2021; Received: 10/27/2021
Completed: 10/27/2021

Moisture NT Water Activity NT	Δ 9-THC 100.91 mg/unit 10.09 mg/serving	CBD 0.25 mg/unit 0.03 mg/serving	Total Cannabinoids 107.80 mg/unit 10.78 mg/serving	Total Terpenes NT
--	---	---	---	----------------------

Summary	SOP Used	Date Tested	Complete
Batch	POT-PREP-002	10/26/2021	Complete



Scan to see results

Cannabinoid Profile

1 Unit = package, 41.78 g. 10 serving(s) per package.

Analyte	LOQ	LOD	%	mg/g	mg/unit	Analyte	LOQ	LOD	%	mg/g	mg/unit
THCa	0.53	0.18	ND	ND	ND	CBDV	0.19	0.02	ND	ND	ND
Δ 9-THC	0.19	0.04	0.242	2.42	100.91	CBN	0.19	0.02	0.003	0.03	1.34
Δ 8-THC	0.19	0.06	0.002	0.02	0.67	CBGa	0.19	0.06	ND	ND	ND
THCV	0.19	0.03	0.001	0.01	0.33	CBG	0.19	0.02	0.008	0.08	3.51
CBDa	0.20	0.07	ND	ND	ND	CBC	0.32	0.10	0.002	0.02	0.79
CBD	0.19	0.03	0.001	0.01	0.25	Total			0.258	2.58	107.80

Units for THC in banner represent units for LOQ and LOD for all analytes. Total THC=THCa * 0.877 + d9-THC; Total CBD = CBDa * 0.877 + CBD. NR= Not Reported, ND= Not Detected. Potency is reported on a dry weight basis. Instrumentation and analysis SOPs used: Cannabinoids:UHPLC-DAD(POT-INST-005),Moisture:Moisture Analyzer(MOISTURE-001),Water Activity:Water Activity Meter(WA-INST-002), Foreign Material:Microscope(FOREIGN-001). Density measured at 19-24 °C, Water Activity measured at 0-90% RH. All QA submitted by the client, All CA State Compliance sampled using SAMPL-SOP-001.

Terpene Profile

Analyte	LOQ	LOD	%	mg/g	Analyte	LOQ	LOD	%	mg/g
---------	-----	-----	---	------	---------	-----	-----	---	------

NR= Not Reported (no analysis was performed), ND= Not Detected (the concentration is less than the Limit of Detection (LOD)). Analytical instrumentation used: HS-GC-MS; samples analyzed according to SOP TERP-INST-003.



Infinite Chemical Analysis Labs
8380 Miramar Mall #102
San Diego, CA
(858) 623-2740
www.infiniteCAL.com
Lic# C8-0000019-LIC

Josh M Swider

Josh Swider
Lab Director, Managing Partner
10/27/2021

Confident Cannabis
All Rights Reserved
support@confidentcannabis.com
(866) 506-5866
www.confidentcannabis.com



This product has been tested by Infinite Chemical Analysis, LLC using valid testing methodologies and a quality system as required by state law. All LQC samples were performed and met the prescribed acceptance criteria in 16 CCR section 5730, pursuant to 16 CCR section 5726(e)(13). Values reported relate only to the product tested. Infinite Chemical Analysis, LLC makes no claims as to the efficacy, safety or other risks associated with any detected or non-detected levels of any compounds reported herein. This Certificate shall not be reproduced except in full, without the written approval of Infinite Chemical Analysis, LLC.



Certificate of Analysis

QA SAMPLE - INFORMATIONAL ONLY

2 of 3

ICAL ID: 20211026-041
Sample: CA211026-002-003
Dragonfruit Coconut Dome Gummy
Strain: Dragonfruit Coconut Dome Gummy
Category: Ingestible

Pacific Manufacturing and Design, LLC
Lic. #
9520 Black Mountain Rd
SAN DIEGO, CA 92126

Lic. #

Batch#:
Primary Size:
Batch Size:
Collected: 10/27/2021; Received: 10/27/2021
Completed: 10/27/2021

Residual Solvent Analysis

Category 1	LOQ	LOD	Limit	Status	Category 2	LOQ	LOD	Limit	Status	Category 2	LOQ	LOD	Limit	Status
------------	-----	-----	-------	--------	------------	-----	-----	-------	--------	------------	-----	-----	-------	--------

NR= Not Reported (no analysis was performed), ND= Not Detected (the concentration is less then the Limit of Detection (LOD)). Analytical instrumentation used: HS-GC-MS; samples analyzed according to SOP RS-INST-003.

Heavy Metal Screening

	LOQ	LOD	Limit	Status
--	-----	-----	-------	--------

NR= Not Reported (no analysis was performed), ND= Not Detected (the concentration is less then the Limit of Detection (LOD)). Analytical instrumentation used: ICP-MS; samples analyzed according to SOP HM-INST-003.

Microbiological Screening

	Result	Status
--	--------	--------

ND=Not Detected. Analytical instrumentation used:qPCR; samples analyzed according to SOP MICRO-INST-001.



Infinite Chemical Analysis Labs
8380 Miramar Mall #102
San Diego, CA
(858) 623-2740
www.infiniteCAL.com
Lic# C8-0000019-LIC

Josh M Swider

Josh Swider
Lab Director, Managing Partner
10/27/2021

Confident Cannabis
All Rights Reserved
support@confidentcannabis.com
(866) 506-5866
www.confidentcannabis.com



This product has been tested by Infinite Chemical Analysis, LLC using valid testing methodologies and a quality system as required by state law. All LQC samples were performed and met the prescribed acceptance criteria in 16 CCR section 5730, pursuant to 16 CCR section 5726(e)(13). Values reported relate only to the product tested. Infinite Chemical Analysis, LLC makes no claims as to the efficacy, safety or other risks associated with any detected or non-detected levels of any compounds reported herein. This Certificate shall not be reproduced except in full, without the written approval of Infinite Chemical Analysis, LLC.



Certificate of Analysis

QA SAMPLE - INFORMATIONAL ONLY

3 of 3

ICAL ID: 20211026-041
Sample: CA211026-002-003
Dragonfruit Coconut Dome Gummy
Strain: Dragonfruit Coconut Dome Gummy
Category: Ingestible

Pacific Manufacturing and Design, LLC
Lic. #
9520 Black Mountain Rd
SAN DIEGO, CA 92126

Lic. #

Batch#:
Primary Size:
Batch Size:
Collected: 10/27/2021; Received: 10/27/2021
Completed: 10/27/2021

Chemical Residue Screening

Category 1	LOQ	LOD	Status	Mycotoxins	LOQ	LOD	Limit	Status
------------	-----	-----	--------	------------	-----	-----	-------	--------

Category 2	LOQ	LOD	Limit	Status	Category 2	LOQ	LOD	Limit	Status
------------	-----	-----	-------	--------	------------	-----	-----	-------	--------

Other Analyte(s):

NR= Not Reported (no analysis was performed), ND= Not Detected (the concentration is less then the Limit of Detection (LOD)). Analytical instrumentation used: LC-MS-MS & GC-MS-MS; samples analyzed according to SOPs PESTMYCO-LC-INST-004 and PEST-GC-INST-003.



Infinite Chemical Analysis Labs
8380 Miramar Mall #102
San Diego, CA
(858) 623-2740
www.infiniteCAL.com
Lic# C8-0000019-LIC

Josh M Swider

Josh Swider
Lab Director, Managing Partner
10/27/2021

Confident Cannabis
All Rights Reserved
support@confidentcannabis.com
(866) 506-5866
www.confidentcannabis.com



This product has been tested by Infinite Chemical Analysis, LLC using valid testing methodologies and a quality system as required by state law. All LQC samples were performed and met the prescribed acceptance criteria in 16 CCR section 5730, pursuant to 16 CCR section 5726(e)(13). Values reported relate only to the product tested. Infinite Chemical Analysis, LLC makes no claims as to the efficacy, safety or other risks associated with any detected or non-detected levels of any compounds reported herein. This Certificate shall not be reproduced except in full, without the written approval of Infinite Chemical Analysis, LLC.



Certificate of Analysis

QA SAMPLE - INFORMATIONAL ONLY

1 of 3

ICAL ID: 20210922-014
Sample: CA210922-010-029
Pomegranate Buckthorn Blister Pack
Strain: Pomegranate Buckthorn Blister Pack
Category: Ingestible

Batch#: _____
Primary Size: _____
Batch Size: _____
Collected: 09/23/2021; Received: 09/23/2021
Completed: 09/23/2021

Lic. # _____

Moisture NT Water Activity NT	Δ 9-THC 93.28 mg/unit 9.33 mg/serving	CBD 0.19 mg/unit 0.02 mg/serving	Total Cannabinoids 101.52 mg/unit 10.15 mg/serving	Total Terpenes NT
--	---	---	---	----------------------

Summary	SOP Used	Date Tested	Complete
Batch	POT-PREP-002	09/22/2021	Complete
Cannabinoids			Complete



Scan to see results

Cannabinoid Profile

1 Unit = package, 37.51 g. 10 serving(s) per package.

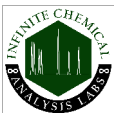
Analyte	LOQ	LOD	%	mg/g	mg/unit	Analyte	LOQ	LOD	%	mg/g	mg/unit
THCa	0.48	0.16	ND	ND	ND	CBDV	0.17	0.02	ND	ND	ND
Δ 9-THC	0.17	0.04	0.249	2.49	93.28	CBN	0.17	0.02	0.002	0.02	0.90
Δ 8-THC	0.17	0.05	ND	ND	ND	CBGa	0.17	0.06	ND	ND	ND
THCV	0.17	0.02	0.001	0.01	0.38	CBG	0.17	0.02	0.013	0.13	4.84
CBDa	0.18	0.06	ND	ND	ND	CBC	0.29	0.09	0.005	0.05	1.94
CBD	0.17	0.03	0.000	0.00	0.19	Total			0.271	2.71	101.52

Total THC=THCa * 0.877 + Δ 9-THC; Total CBD = CBDa * 0.877 + CBD. NR= Not Reported, ND= Not Detected. Potency is reported on a dry weight basis. Instrumentation and analysis SOPs used: Cannabinoids:UHPLC-DAD(POT-INST-005),Moisture:Moisture Analyzer(MOISTURE-001),Water Activity:Water Activity Meter(WA-INST-002), Foreign Material:Microscope(FOREIGN-001). Density measured at 19-24 °C. Water Activity measured at 0-90% RH. All QA submitted by the client, All CA State Compliance sampled using SAMPL-SOP-001.

Terpene Profile

Analyte	LOQ	LOD	%	mg/g	Analyte	LOQ	LOD	%	mg/g
---------	-----	-----	---	------	---------	-----	-----	---	------

NR= Not Reported (no analysis was performed), ND= Not Detected (the concentration is less than the Limit of Detection (LOD)). Analytical instrumentation used: HS-GC-MS; samples analyzed according to SOP TERP-INST-003.



Infinite Chemical Analysis Labs
8380 Miramar Mall #102
San Diego, CA
(858) 623-2740
www.infiniteCAL.com
Lic# C8-0000019-LIC

Josh M Swider

Josh Swider
Lab Director, Managing Partner
09/23/2021

Confident Cannabis
All Rights Reserved
support@confidentcannabis.com
(866) 506-5866
www.confidentcannabis.com



This product has been tested by Infinite Chemical Analysis, LLC using valid testing methodologies and a quality system as required by state law. All LQC samples were performed and met the prescribed acceptance criteria in 16 CCR section 5730, pursuant to 16 CCR section 5726(e)(13). Values reported relate only to the product tested. Infinite Chemical Analysis, LLC makes no claims as to the efficacy, safety or other risks associated with any detected or non-detected levels of any compounds reported herein. This Certificate shall not be reproduced except in full, without the written approval of Infinite Chemical Analysis, LLC.



Certificate of Analysis

QA SAMPLE - INFORMATIONAL ONLY

2 of 3

ICAL ID: 20210922-014
Sample: CA210922-010-029
Pomegranate Buckthorn Blister Pack
Strain: Pomegranate Buckthorn Blister Pack
Category: Ingestible

Batch#: _____
Primary Size: _____
Batch Size: _____
Collected: 09/23/2021; Received: 09/23/2021
Completed: 09/23/2021

Lic. # _____

Residual Solvent Analysis

Category 1	LOQ	LOD	Limit	Status	Category 2	LOQ	LOD	Limit	Status	Category 2	LOQ	LOD	Limit	Status
------------	-----	-----	-------	--------	------------	-----	-----	-------	--------	------------	-----	-----	-------	--------

NR= Not Reported (no analysis was performed), ND= Not Detected (the concentration is less then the Limit of Detection (LOD)). Analytical instrumentation used: HS-GC-MS; samples analyzed according to SOP RS-INST-003.

Heavy Metal Screening

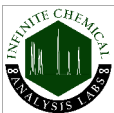
	LOQ	LOD	Limit	Status
--	-----	-----	-------	--------

NR= Not Reported (no analysis was performed), ND= Not Detected (the concentration is less then the Limit of Detection (LOD)). Analytical instrumentation used: ICP-MS; samples analyzed according to SOP HM-INST-003.

Microbiological Screening

	Result	Status
--	--------	--------

ND=Not Detected. Analytical instrumentation used:qPCR; samples analyzed according to SOP MICRO-INST-001.



Infinite Chemical Analysis Labs
8380 Miramar Mall #102
San Diego, CA
(858) 623-2740
www.infiniteCAL.com
Lic# C8-0000019-LIC

Josh M Swider

Josh Swider
Lab Director, Managing Partner
09/23/2021

Confident Cannabis
All Rights Reserved
support@confidentcannabis.com
(866) 506-5866
www.confidentcannabis.com



This product has been tested by Infinite Chemical Analysis, LLC using valid testing methodologies and a quality system as required by state law. All LQC samples were performed and met the prescribed acceptance criteria in 16 CCR section 5730, pursuant to 16 CCR section 5726(e)(13). Values reported relate only to the product tested. Infinite Chemical Analysis, LLC makes no claims as to the efficacy, safety or other risks associated with any detected or non-detected levels of any compounds reported herein. This Certificate shall not be reproduced except in full, without the written approval of Infinite Chemical Analysis, LLC.



Certificate of Analysis

QA SAMPLE - INFORMATIONAL ONLY

3 of 3

ICAL ID: 20210922-014
Sample: CA210922-010-029
Pomegranate Buckthorn Blister Pack
Strain: Pomegranate Buckthorn Blister Pack
Category: Ingestible

Batch#: _____
Primary Size: _____
Batch Size: _____
Collected: 09/23/2021; Received: 09/23/2021
Completed: 09/23/2021

Lic. # _____

Chemical Residue Screening

Category 1	LOQ	LOD	Status	Mycotoxins	LOQ	LOD	Limit	Status
------------	-----	-----	--------	------------	-----	-----	-------	--------

Category 2	LOQ	LOD	Limit	Status	Category 2	LOQ	LOD	Limit	Status
------------	-----	-----	-------	--------	------------	-----	-----	-------	--------

Other Analyte(s):

NR= Not Reported (no analysis was performed), ND= Not Detected (the concentration is less than the Limit of Detection (LOD)). Analytical instrumentation used: LC-MS-MS & GC-MS-MS; samples analyzed according to SOPs PESTMYCO-LC-INST-004 and PEST-GC-INST-003.



Infinite Chemical Analysis Labs
8380 Miramar Mall #102
San Diego, CA
(858) 623-2740
www.infiniteCAL.com
Lic# C8-0000019-LIC

Josh M Swider

Josh Swider
Lab Director, Managing Partner
09/23/2021

Confident Cannabis
All Rights Reserved
support@confidentcannabis.com
(866) 506-5866
www.confidentcannabis.com



This product has been tested by Infinite Chemical Analysis, LLC using valid testing methodologies and a quality system as required by state law. All LQC samples were performed and met the prescribed acceptance criteria in 16 CCR section 5730, pursuant to 16 CCR section 5726(e)(13). Values reported relate only to the product tested. Infinite Chemical Analysis, LLC makes no claims as to the efficacy, safety or other risks associated with any detected or non-detected levels of any compounds reported herein. This Certificate shall not be reproduced except in full, without the written approval of Infinite Chemical Analysis, LLC.