

## Gelato 41

Sample ID: SA-11152021-5549  
 Batch:  
 Type: Finished Products  
 Matrix: Concentrate - Distillate

Received: 11/15/2021  
 Completed: 11/29/2021

**Client**  
 Cake  
 1007 West Grove Ave, Suite B  
 Orange, CA 92865  
 USA



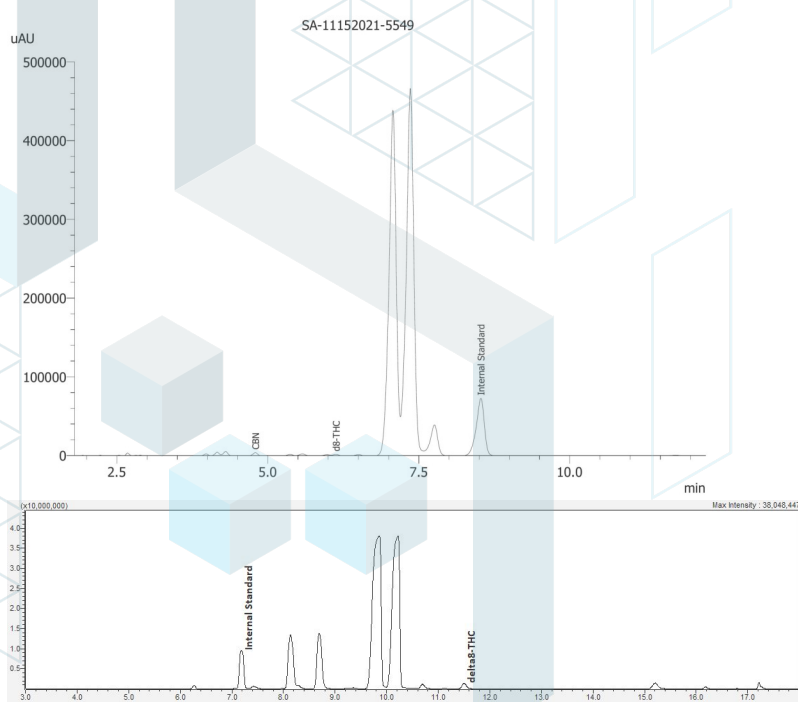
## Summary

Test	Date Tested	Status
Cannabinoids	11/29/2021	Tested
Cannabinoids (Additional)	11/29/2021	Tested

## Cannabinoids by HPLC-PDA and GC-MS/MS

<b>ND</b>	<b>1.39 %</b>	<b>1.51 %</b>	<b>Not Tested</b>	<b>Not Tested</b>	<b>Yes</b>
Total Δ9-THC	Δ8-THC	Total Cannabinoids	Moisture Content	Foreign Matter	Internal Marker Recovered

Analyte	LOD (%)	LOQ (%)	Result (%)	Result (mg/g)
CBC	0.0095	0.0284	ND	ND
CBCA	0.0181	0.0543	ND	ND
CBCV	0.006	0.018	ND	ND
CBD	0.0081	0.0242	ND	ND
CBDA	0.0043	0.013	ND	ND
CBDV	0.0061	0.0182	ND	ND
CBDVA	0.0021	0.0063	ND	ND
CBG	0.0057	0.0172	ND	ND
CBGA	0.0049	0.0147	ND	ND
CBL	0.0112	0.0335	ND	ND
CBLA	0.0124	0.0371	ND	ND
CBN	0.0056	0.0169	0.122	1.22
CBNA	0.006	0.0181	ND	ND
Δ8-THC	0.0104	0.0312	1.39	13.9
Δ9-THC	0.0076	0.0227	ND	ND
Δ9-THCA	0.0084	0.0251	ND	ND
Δ9-THCV	0.0069	0.0206	ND	ND
Δ9-THCVA	0.0062	0.0186	ND	ND
<b>Total Δ9-THC</b>			<b>ND</b>	<b>ND</b>
<b>Total CBD</b>			<b>ND</b>	<b>ND</b>
<b>Total</b>			<b>1.51</b>	<b>15.1</b>



ND = Not Detected; NT = Not Tested; LOD = Limit of Detection; LOQ = Limit of Quantitation; RL = Reporting Limit; Δ = Delta; Total Δ9-THC = Δ9-THCA \* 0.877 + Δ9-THC; Total CBD = CBDA \* 0.877 + CBD;

COA Generated By: Senior Scientist,  
 Scott Caudill  
 Date: 11/29/2021

Tested By: Senior Scientist, Scott Caudill  
 Date: 11/29/2021

This product or substance has been tested by KCA Laboratories using validated testing methodologies and an ISO/IEC 17025:2017 accredited quality system. Values reported relate only to the product or substance tested. The reported result is based on a sample weight. Unless otherwise stated, results of tests performed on all quality control samples met criteria for acceptance established by KCA Laboratories. KCA Laboratories makes no claims as to the efficacy, safety or other risks associated with any detected or non-detected amounts of any substances reported herein. This Certificate of Analysis shall not be reproduced except in full, without the written approval of KCA Laboratories. KCA Laboratories can provide measurement uncertainty upon request.



**Gelato 41**

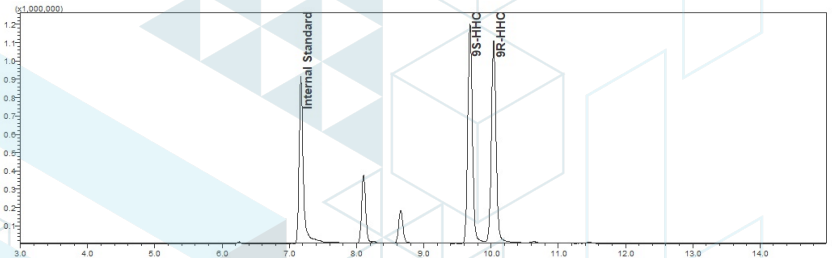
Sample ID: SA-11152021-5549  
 Batch:  
 Type: Finished Products  
 Matrix: Concentrate - Distillate

Received: 11/15/2021  
 Completed: 11/29/2021

**Client**  
 Cake  
 1007 West Grove Ave, Suite B  
 Orange, CA 92865  
 USA

**Cannabinoids by HPLC-PDA, LC-MS/MS, and/or GC-MS/MS**

Analyte	LOD (%)	LOQ (%)	Result (%)	Result (mg/g)
(9R)-HHC			39.1	391.0
(9S)-HHC			49.1	491.0



ND = Not Detected; NT = Not Tested; LOD = Limit of Detection; LOQ = Limit of Quantitation; RL = Reporting Limit; Δ = Delta; Total Δ9-THC = Δ9-THCA \* 0.877 + Δ9-THC; Total CBD = CBDA \* 0.877 + CBD;




COA Generated By: Senior Scientist,  
 Scott Caudill  
 Date: 11/29/2021

Tested By: Senior Scientist, Scott Caudill  
 Date: 11/29/2021



## Kush Mints

Sample ID: SA-11152021-5553  
 Batch:  
 Type: Finished Products  
 Matrix: Concentrate - Distillate

Received: 11/15/2021  
 Completed: 11/29/2021

**Client**  
 Cake  
 1007 West Grove Ave, Suite B  
 Orange, CA 92865  
 USA



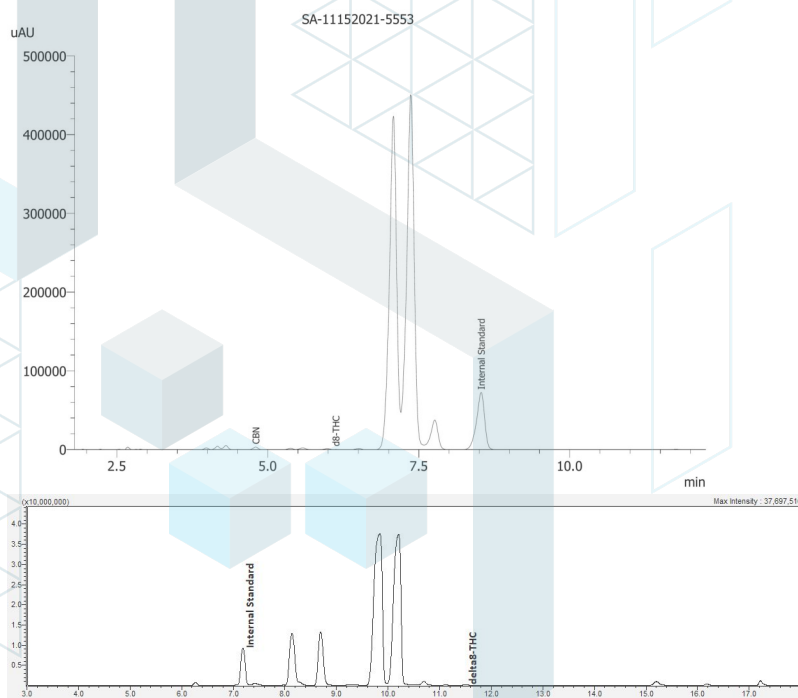
## Summary

Test	Date Tested	Status
Cannabinoids	11/29/2021	Tested
Cannabinoids (Additional)	11/29/2021	Tested

## Cannabinoids by HPLC-PDA and GC-MS/MS

<b>ND</b>	<b>0.150 %</b>	<b>0.252 %</b>	<b>Not Tested</b>	<b>Not Tested</b>	<b>Yes</b>
Total Δ9-THC	Δ8-THC	Total Cannabinoids	Moisture Content	Foreign Matter	Internal Marker Recovered

Analyte	LOD (%)	LOQ (%)	Result (%)	Result (mg/g)
CBC	0.0095	0.0284	ND	ND
CBCA	0.0181	0.0543	ND	ND
CBCV	0.006	0.018	ND	ND
CBD	0.0081	0.0242	ND	ND
CBDA	0.0043	0.013	ND	ND
CBDV	0.0061	0.0182	ND	ND
CBDVA	0.0021	0.0063	ND	ND
CBG	0.0057	0.0172	ND	ND
CBGA	0.0049	0.0147	ND	ND
CBL	0.0112	0.0335	ND	ND
CBLA	0.0124	0.0371	ND	ND
CBN	0.0056	0.0169	0.102	1.02
CBNA	0.006	0.0181	ND	ND
Δ8-THC	0.0104	0.0312	0.149	1.50
Δ9-THC	0.0076	0.0227	ND	ND
Δ9-THCA	0.0084	0.0251	ND	ND
Δ9-THCV	0.0069	0.0206	ND	ND
Δ9-THCVA	0.0062	0.0186	ND	ND
<b>Total Δ9-THC</b>			<b>ND</b>	<b>ND</b>
<b>Total CBD</b>			<b>ND</b>	<b>ND</b>
<b>Total</b>			<b>0.252</b>	<b>2.52</b>



ND = Not Detected; NT = Not Tested; LOD = Limit of Detection; LOQ = Limit of Quantitation; RL = Reporting Limit; Δ = Delta; Total Δ9-THC = Δ9-THCA \* 0.877 + Δ9-THC; Total CBD = CBDA \* 0.877 + CBD;

*Scott Caudill*  
 COA Generated By: Senior Scientist,  
 Scott Caudill  
 Date: 11/29/2021

*Scott Caudill*  
 Tested By: Senior Scientist, Scott Caudill  
 Date: 11/29/2021



This product or substance has been tested by KCA Laboratories using validated testing methodologies and an ISO/IEC 17025:2017 accredited quality system. Values reported relate only to the product or substance tested. The reported result is based on a sample weight. Unless otherwise stated, results of tests performed on all quality control samples met criteria for acceptance established by KCA Laboratories. KCA Laboratories makes no claims as to the efficacy, safety or other risks associated with any detected or non-detected amounts of any substances reported herein. This Certificate of Analysis shall not be reproduced except in full, without the written approval of KCA Laboratories. KCA Laboratories can provide measurement uncertainty upon request.



**KCA Laboratories**  
232 North Plaza Drive  
Nicholasville, KY 40356

+1-833-KCA-LABS  
<https://kcalabs.com>  
KDA Lic.# P\_0058

## Certificate of Analysis

2 of 2

### Kush Mints

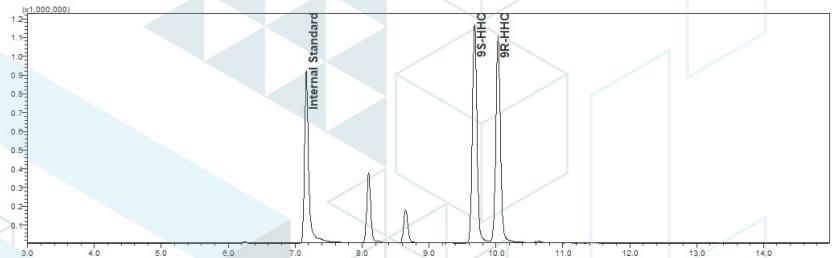
Sample ID: SA-11152021-5553  
Batch:  
Type: Finished Products  
Matrix: Concentrate - Distillate

Received: 11/15/2021  
Completed: 11/29/2021

**Client**  
Cake  
1007 West Grove Ave, Suite B  
Orange, CA 92865  
USA

### Cannabinoids by HPLC-PDA, LC-MS/MS, and/or GC-MS/MS

Analyte	LOD (%)	LOQ (%)	Result (%)	Result (mg/g)
(9R)-HHC			41.3	413.0
(9S)-HHC			51.5	515.0



ND = Not Detected; NT = Not Tested; LOD = Limit of Detection; LOQ = Limit of Quantitation; RL = Reporting Limit;  $\Delta$  = Delta; Total  $\Delta$ 9-THC =  $\Delta$ 9-THCA \* 0.877 +  $\Delta$ 9-THC; Total CBD = CBDA \* 0.877 + CBD;

COA Generated By: Senior Scientist,  
Scott Caudill  
Date: 11/29/2021

Tested By: Senior Scientist, Scott Caudill  
Date: 11/29/2021



This product or substance has been tested by KCA Laboratories using validated testing methodologies and an ISO/IEC 17025:2017 accredited quality system. Values reported relate only to the product or substance tested. The reported result is based on a sample weight. Unless otherwise stated, results of tests performed on all quality control samples met criteria for acceptance established by KCA Laboratories. KCA Laboratories makes no claims as to the efficacy, safety or other risks associated with any detected or non-detected amounts of any substances reported herein. This Certificate of Analysis shall not be reproduced except in full, without the written approval of KCA Laboratories. KCA Laboratories can provide measurement uncertainty upon request.



## Pineapple Express

Sample ID: SA-11152021-5552  
 Batch:  
 Type: Finished Products  
 Matrix: Concentrate - Distillate

Received: 11/15/2021  
 Completed: 11/29/2021

**Client**  
 Cake  
 1007 West Grove Ave, Suite B  
 Orange, CA 92865  
 USA



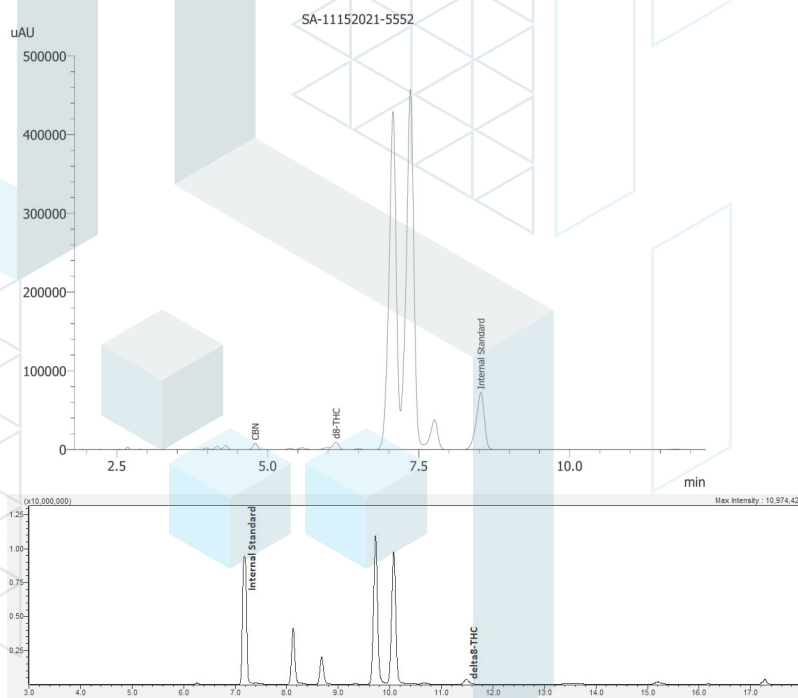
## Summary

Test	Date Tested	Status
Cannabinoids	11/29/2021	Tested
Cannabinoids (Additional)	11/29/2021	Tested

## Cannabinoids by HPLC-PDA and GC-MS/MS

<b>ND</b>	<b>0.398 %</b>	<b>0.650 %</b>	<b>Not Tested</b>	<b>Not Tested</b>	<b>Yes</b>
Total Δ9-THC	Δ8-THC	Total Cannabinoids	Moisture Content	Foreign Matter	Internal Marker Recovered

Analyte	LOD (%)	LOQ (%)	Result (%)	Result (mg/g)
CBC	0.0095	0.0284	ND	ND
CBCA	0.0181	0.0543	ND	ND
CBCV	0.006	0.018	ND	ND
CBD	0.0081	0.0242	ND	ND
CBDA	0.0043	0.013	ND	ND
CBDV	0.0061	0.0182	ND	ND
CBDVA	0.0021	0.0063	ND	ND
CBG	0.0057	0.0172	ND	ND
CBGA	0.0049	0.0147	ND	ND
CBL	0.0112	0.0335	ND	ND
CBLA	0.0124	0.0371	ND	ND
CBN	0.0056	0.0169	0.252	2.52
CBNA	0.006	0.0181	ND	ND
Δ8-THC	0.0104	0.0312	0.398	3.98
Δ9-THC	0.0076	0.0227	ND	ND
Δ9-THCA	0.0084	0.0251	ND	ND
Δ9-THCV	0.0069	0.0206	ND	ND
Δ9-THCVA	0.0062	0.0186	ND	ND
<b>Total Δ9-THC</b>			<b>ND</b>	<b>ND</b>
<b>Total CBD</b>			<b>ND</b>	<b>ND</b>
<b>Total</b>			<b>0.650</b>	<b>6.50</b>



ND = Not Detected; NT = Not Tested; LOD = Limit of Detection; LOQ = Limit of Quantitation; RL = Reporting Limit; Δ = Delta; Total Δ9-THC = Δ9-THCA \* 0.877 + Δ9-THC; Total CBD = CBDA \* 0.877 + CBD;

COA Generated By: Senior Scientist,  
 Scott Caudill  
 Date: 11/29/2021

Tested By: Senior Scientist, Scott Caudill  
 Date: 11/29/2021



This product or substance has been tested by KCA Laboratories using validated testing methodologies and an ISO/IEC 17025:2017 accredited quality system. Values reported relate only to the product or substance tested. The reported result is based on a sample weight. Unless otherwise stated, results of tests performed on all quality control samples met criteria for acceptance established by KCA Laboratories. KCA Laboratories makes no claims as to the efficacy, safety or other risks associated with any detected or non-detected amounts of any substances reported herein. This Certificate of Analysis shall not be reproduced except in full, without the written approval of KCA Laboratories. KCA Laboratories can provide measurement uncertainty upon request.



**KCA Laboratories**  
232 North Plaza Drive  
Nicholasville, KY 40356

+1-833-KCA-LABS  
<https://kcalabs.com>  
KDA Lic.# P\_0058

## Certificate of Analysis

2 of 2

### Pineapple Express

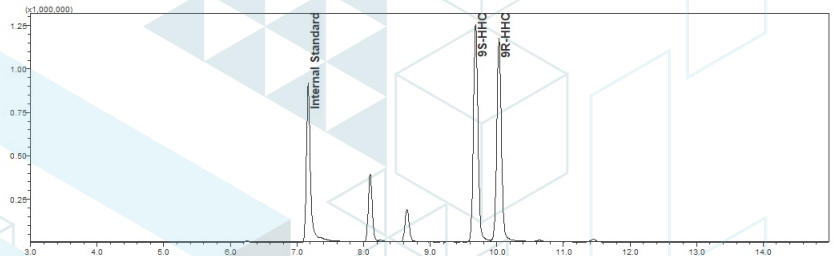
Sample ID: SA-11152021-5552  
Batch:  
Type: Finished Products  
Matrix: Concentrate - Distillate

Received: 11/15/2021  
Completed: 11/29/2021

**Client**  
Cake  
1007 West Grove Ave, Suite B  
Orange, CA 92865  
USA

### Cannabinoids by HPLC-PDA, LC-MS/MS, and/or GC-MS/MS

Analyte	LOD (%)	LOQ (%)	Result (%)	Result (mg/g)
(9R)-HHC			42.1	421.0
(9S)-HHC			52.2	522.0



ND = Not Detected; NT = Not Tested; LOD = Limit of Detection; LOQ = Limit of Quantitation; RL = Reporting Limit; Δ = Delta; Total Δ9-THC = Δ9-THCA \* 0.877 + Δ9-THC; Total CBD = CBDA \* 0.877 + CBD;

COA Generated By: Senior Scientist,  
Scott Caudill  
Date: 11/29/2021

Tested By: Senior Scientist, Scott Caudill  
Date: 11/29/2021



This product or substance has been tested by KCA Laboratories using validated testing methodologies and an ISO/IEC 17025:2017 accredited quality system. Values reported relate only to the product or substance tested. The reported result is based on a sample weight. Unless otherwise stated, results of tests performed on all quality control samples met criteria for acceptance established by KCA Laboratories. KCA Laboratories makes no claims as to the efficacy, safety or other risks associated with any detected or non-detected amounts of any substances reported herein. This Certificate of Analysis shall not be reproduced except in full, without the written approval of KCA Laboratories. KCA Laboratories can provide measurement uncertainty upon request.

## Rainbow Glue

Sample ID: SA-11152021-5550  
 Batch:  
 Type: Finished Products  
 Matrix: Concentrate - Distillate

Received: 11/15/2021  
 Completed: 11/29/2021

**Client**  
 Cake  
 1007 West Grove Ave, Suite B  
 Orange, CA 92865  
 USA



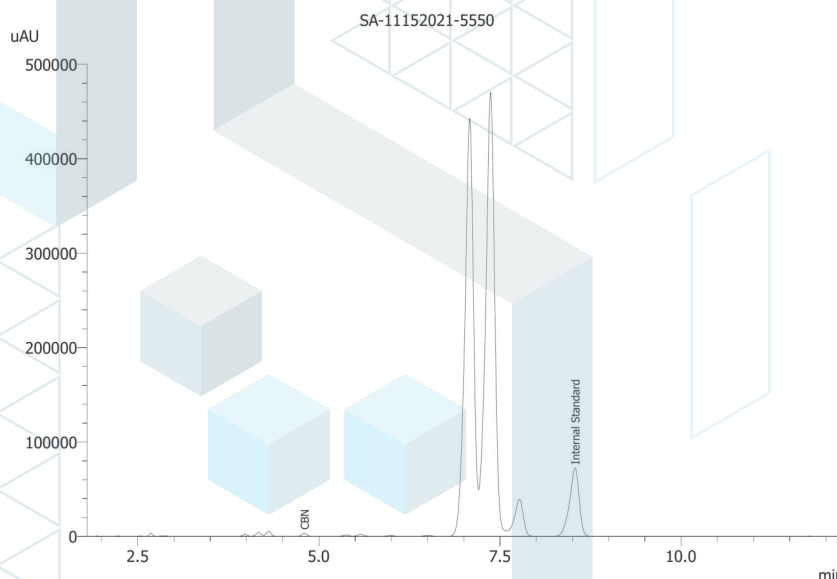
## Summary

Test	Date Tested	Status
Cannabinoids	11/29/2021	Tested
Cannabinoids (Additional)	11/29/2021	Tested

## Cannabinoids by HPLC-PDA

<b>ND</b>	<b>0.103 %</b>	<b>0.103 %</b>	<b>Not Tested</b>	<b>Not Tested</b>	<b>Yes</b>
Total Δ9-THC	CBN	Total Cannabinoids	Moisture Content	Foreign Matter	Internal Marker Recovered

Analyte	LOD (%)	LOQ (%)	Result (%)	Result (mg/g)
CBC	0.0095	0.0284	ND	ND
CBCA	0.0181	0.0543	ND	ND
CBCV	0.006	0.018	ND	ND
CBD	0.0081	0.0242	ND	ND
CBDA	0.0043	0.013	ND	ND
CBDV	0.0061	0.0182	ND	ND
CBDVA	0.0021	0.0063	ND	ND
CBG	0.0057	0.0172	ND	ND
CBGA	0.0049	0.0147	ND	ND
CBL	0.0112	0.0335	ND	ND
CBLA	0.0124	0.0371	ND	ND
CBN	0.0056	0.0169	0.103	1.03
CBNA	0.006	0.0181	ND	ND
Δ8-THC	0.0104	0.0312	ND	ND
Δ9-THC	0.0076	0.0227	ND	ND
Δ9-THCA	0.0084	0.0251	ND	ND
Δ9-THCV	0.0069	0.0206	ND	ND
Δ9-THCVA	0.0062	0.0186	ND	ND
<b>Total Δ9-THC</b>			<b>ND</b>	<b>ND</b>
<b>Total CBD</b>			<b>ND</b>	<b>ND</b>
<b>Total</b>			<b>0.103</b>	<b>1.03</b>



ND = Not Detected; NT = Not Tested; LOD = Limit of Detection; LOQ = Limit of Quantitation; RL = Reporting Limit; Δ = Delta; Total Δ9-THC = Δ9-THCA \* 0.877 + Δ9-THC; Total CBD = CBDA \* 0.877 + CBD;

*Scott Caudill*  
 COA Generated By: Senior Scientist,  
 Scott Caudill  
 Date: 11/29/2021

*Scott Caudill*  
 Tested By: Senior Scientist, Scott Caudill  
 Date: 11/29/2021



ISO/IEC 17025:2017 Accredited  
 Accreditation #108651





**KCA Laboratories**  
232 North Plaza Drive  
Nicholasville, KY 40356

+1-833-KCA-LABS  
<https://kcalabs.com>  
KDA Lic.# P\_0058

## Certificate of Analysis

2 of 2

### Rainbow Glue

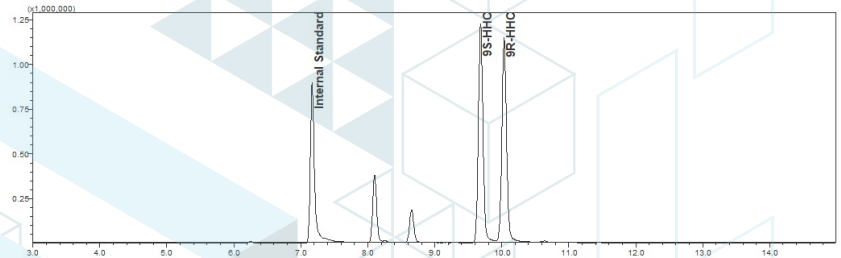
Sample ID: SA-11152021-5550  
Batch:  
Type: Finished Products  
Matrix: Concentrate - Distillate

Received: 11/15/2021  
Completed: 11/29/2021

**Client**  
Cake  
1007 West Grove Ave, Suite B  
Orange, CA 92865  
USA

### Cannabinoids by HPLC-PDA, LC-MS/MS, and/or GC-MS/MS

Analyte	LOD (%)	LOQ (%)	Result (%)	Result (mg/g)
(9R)-HHC			42.2	422.0
(9S)-HHC			52.6	526.0



ND = Not Detected; NT = Not Tested; LOD = Limit of Detection; LOQ = Limit of Quantitation; RL = Reporting Limit;  $\Delta$  = Delta; Total  $\Delta$ 9-THC =  $\Delta$ 9-THCA \* 0.877 +  $\Delta$ 9-THC; Total CBD = CBDA \* 0.877 + CBD;

COA Generated By: Senior Scientist,  
Scott Caudill  
Date: 11/29/2021

Tested By: Senior Scientist, Scott Caudill  
Date: 11/29/2021



This product or substance has been tested by KCA Laboratories using validated testing methodologies and an ISO/IEC 17025:2017 accredited quality system. Values reported relate only to the product or substance tested. The reported result is based on a sample weight. Unless otherwise stated, results of tests performed on all quality control samples met criteria for acceptance established by KCA Laboratories. KCA Laboratories makes no claims as to the efficacy, safety or other risks associated with any detected or non-detected amounts of any substances reported herein. This Certificate of Analysis shall not be reproduced except in full, without the written approval of KCA Laboratories. KCA Laboratories can provide measurement uncertainty upon request.

## Strawberry Sour Diesel

Sample ID: SA-11152021-5554  
 Batch:  
 Type: Finished Products  
 Matrix: Concentrate - Distillate

Received: 11/15/2021  
 Completed: 11/29/2021

**Client**  
 Cake  
 1007 West Grove Ave, Suite B  
 Orange, CA 92865  
 USA



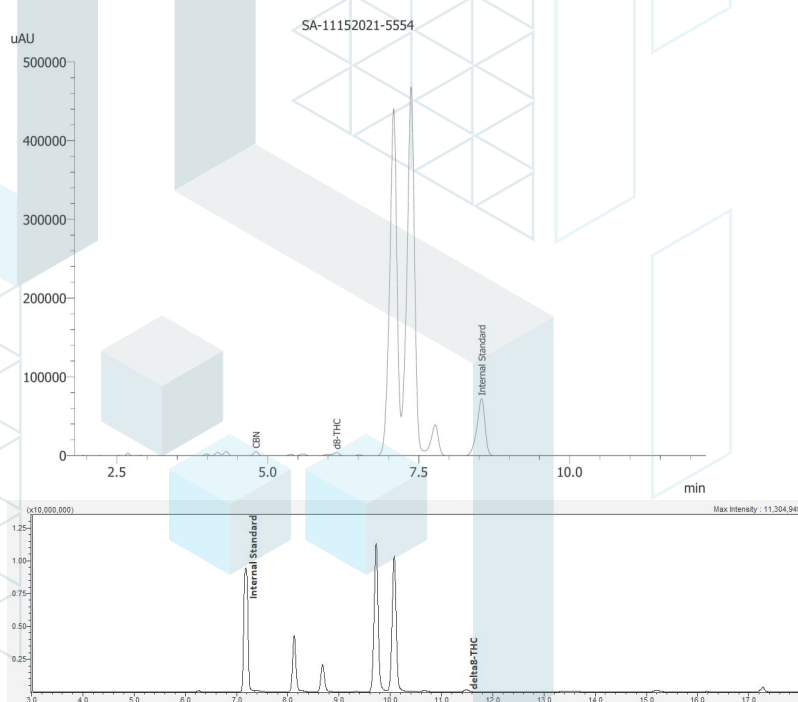
### Summary

Test	Date Tested	Status
Cannabinoids	11/29/2021	Tested
Cannabinoids (Additional)	11/29/2021	Tested

### Cannabinoids by HPLC-PDA and GC-MS/MS

<b>ND</b>	<b>0.187 %</b>	<b>0.354 %</b>	<b>Not Tested</b>	<b>Not Tested</b>	<b>Yes</b>
Total Δ9-THC	Δ8-THC	Total Cannabinoids	Moisture Content	Foreign Matter	Internal Marker Recovered

Analyte	LOD (%)	LOQ (%)	Result (%)	Result (mg/g)
CBC	0.0095	0.0284	ND	ND
CBCA	0.0181	0.0543	ND	ND
CBCV	0.006	0.018	ND	ND
CBD	0.0081	0.0242	ND	ND
CBDA	0.0043	0.013	ND	ND
CBDV	0.0061	0.0182	ND	ND
CBDVA	0.0021	0.0063	ND	ND
CBG	0.0057	0.0172	ND	ND
CBGA	0.0049	0.0147	ND	ND
CBL	0.0112	0.0335	ND	ND
CBLA	0.0124	0.0371	ND	ND
CBN	0.0056	0.0169	0.167	1.67
CBNA	0.006	0.0181	ND	ND
Δ8-THC	0.0104	0.0312	0.187	1.87
Δ9-THC	0.0076	0.0227	ND	ND
Δ9-THCA	0.0084	0.0251	ND	ND
Δ9-THCV	0.0069	0.0206	ND	ND
Δ9-THCVA	0.0062	0.0186	ND	ND
<b>Total Δ9-THC</b>			<b>ND</b>	<b>ND</b>
<b>Total CBD</b>			<b>ND</b>	<b>ND</b>
<b>Total</b>			<b>0.354</b>	<b>3.54</b>



ND = Not Detected; NT = Not Tested; LOD = Limit of Detection; LOQ = Limit of Quantitation; RL = Reporting Limit; Δ = Delta; Total Δ9-THC = Δ9-THCA \* 0.877 + Δ9-THC; Total CBD = CBDA \* 0.877 + CBD;

COA Generated By: Senior Scientist,  
 Scott Caudill  
 Date: 11/29/2021

Tested By: Senior Scientist, Scott Caudill  
 Date: 11/29/2021

This product or substance has been tested by KCA Laboratories using validated testing methodologies and an ISO/IEC 17025:2017 accredited quality system. Values reported relate only to the product or substance tested. The reported result is based on a sample weight. Unless otherwise stated, results of tests performed on all quality control samples met criteria for acceptance established by KCA Laboratories. KCA Laboratories makes no claims as to the efficacy, safety or other risks associated with any detected or non-detected amounts of any substances reported herein. This Certificate of Analysis shall not be reproduced except in full, without the written approval of KCA Laboratories. KCA Laboratories can provide measurement uncertainty upon request.





**KCA Laboratories**  
232 North Plaza Drive  
Nicholasville, KY 40356

+1-833-KCA-LABS  
<https://kcalabs.com>  
KDA Lic.# P\_0058

## Certificate of Analysis

2 of 2

### Strawberry Sour Diesel

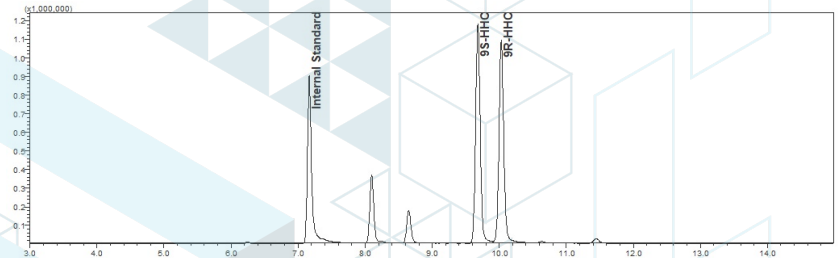
Sample ID: SA-11152021-5554  
Batch:  
Type: Finished Products  
Matrix: Concentrate - Distillate

Received: 11/15/2021  
Completed: 11/29/2021

**Client**  
Coke  
1007 West Grove Ave, Suite B  
Orange, CA 92865  
USA

### Cannabinoids by HPLC-PDA, LC-MS/MS, and/or GC-MS/MS

Analyte	LOD (%)	LOQ (%)	Result (%)	Result (mg/g)
(9R)-HHC			38.1	381.0
(9S)-HHC			47.2	472.0



ND = Not Detected; NT = Not Tested; LOD = Limit of Detection; LOQ = Limit of Quantitation; RL = Reporting Limit; Δ = Delta; Total Δ9-THC = Δ9-THCA \* 0.877 + Δ9-THC; Total CBD = CBDA \* 0.877 + CBD;

COA Generated By: Senior Scientist,  
Scott Caudill  
Date: 11/29/2021

Tested By: Senior Scientist, Scott Caudill  
Date: 11/29/2021



This product or substance has been tested by KCA Laboratories using validated testing methodologies and an ISO/IEC 17025:2017 accredited quality system. Values reported relate only to the product or substance tested. The reported result is based on a sample weight. Unless otherwise stated, results of tests performed on all quality control samples met criteria for acceptance established by KCA Laboratories. KCA Laboratories makes no claims as to the efficacy, safety or other risks associated with any detected or non-detected amounts of any substances reported herein. This Certificate of Analysis shall not be reproduced except in full, without the written approval of KCA Laboratories. KCA Laboratories can provide measurement uncertainty upon request.



## Blue Dream

Sample ID: SA-11152021-5555  
 Batch:  
 Type: Finished Products  
 Matrix: Concentrate - Distillate

Received: 11/15/2021  
 Completed: 11/29/2021

**Client**  
 Cake  
 1007 West Grove Ave, Suite B  
 Orange, CA 92865  
 USA



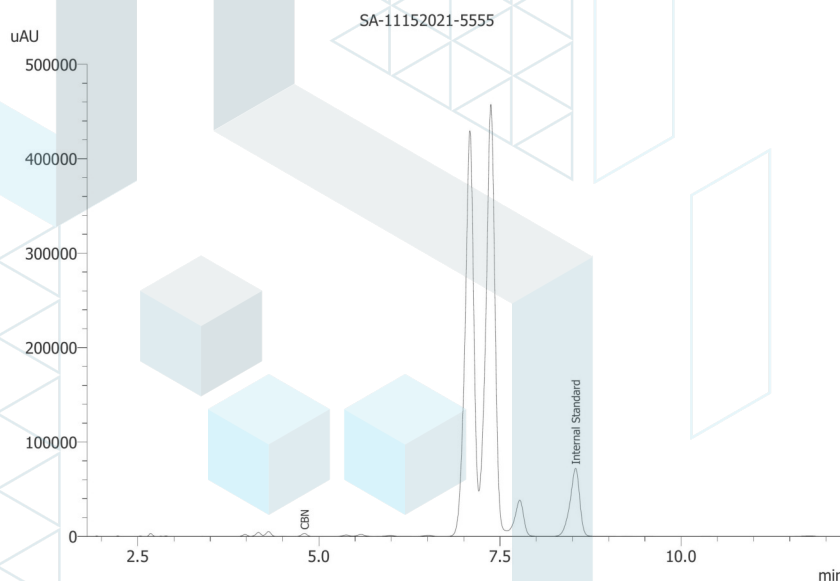
## Summary

Test	Date Tested	Status
Cannabinoids	11/29/2021	Tested
Cannabinoids (Additional)	11/29/2021	Tested

## Cannabinoids by HPLC-PDA

<b>ND</b>	<b>0.101 %</b>	<b>0.101 %</b>	<b>Not Tested</b>	<b>Not Tested</b>	<b>Yes</b>
Total Δ9-THC	CBN	Total Cannabinoids	Moisture Content	Foreign Matter	Internal Marker Recovered

Analyte	LOD (%)	LOQ (%)	Result (%)	Result (mg/g)
CBC	0.0095	0.0284	ND	ND
CBCA	0.0181	0.0543	ND	ND
CBCV	0.006	0.018	ND	ND
CBD	0.0081	0.0242	ND	ND
CBDA	0.0043	0.013	ND	ND
CBDV	0.0061	0.0182	ND	ND
CBDVA	0.0021	0.0063	ND	ND
CBG	0.0057	0.0172	ND	ND
CBGA	0.0049	0.0147	ND	ND
CBL	0.0112	0.0335	ND	ND
CBLA	0.0124	0.0371	ND	ND
CBN	0.0056	0.0169	0.101	1.01
CBNA	0.006	0.0181	ND	ND
Δ8-THC	0.0104	0.0312	ND	ND
Δ9-THC	0.0076	0.0227	ND	ND
Δ9-THCA	0.0084	0.0251	ND	ND
Δ9-THCV	0.0069	0.0206	ND	ND
Δ9-THCVA	0.0062	0.0186	ND	ND
<b>Total Δ9-THC</b>			<b>ND</b>	<b>ND</b>
<b>Total CBD</b>			<b>ND</b>	<b>ND</b>
<b>Total</b>			<b>0.101</b>	<b>1.01</b>



ND = Not Detected; NT = Not Tested; LOD = Limit of Detection; LOQ = Limit of Quantitation; RL = Reporting Limit; Δ = Delta; Total Δ9-THC = Δ9-THCA \* 0.877 + Δ9-THC; Total CBD = CBDA \* 0.877 + CBD;

COA Generated By: Senior Scientist,  
 Scott Caudill  
 Date: 11/29/2021

Tested By: Senior Scientist, Scott Caudill  
 Date: 11/29/2021



ISO/IEC 17025:2017 Accredited  
 Accreditation #108651



This product or substance has been tested by KCA Laboratories using validated testing methodologies and an ISO/IEC 17025:2017 accredited quality system. Values reported relate only to the product or substance tested. The reported result is based on a sample weight. Unless otherwise stated, results of tests performed on all quality control samples met criteria for acceptance established by KCA Laboratories. KCA Laboratories makes no claims as to the efficacy, safety or other risks associated with any detected or non-detected amounts of any substances reported herein. This Certificate of Analysis shall not be reproduced except in full, without the written approval of KCA Laboratories. KCA Laboratories can provide measurement uncertainty upon request.



**KCA Laboratories**  
232 North Plaza Drive  
Nicholasville, KY 40356

+1-833-KCA-LABS  
<https://kcalabs.com>  
KDA Lic.# P\_0058

## Certificate of Analysis

2 of 2

### Blue Dream

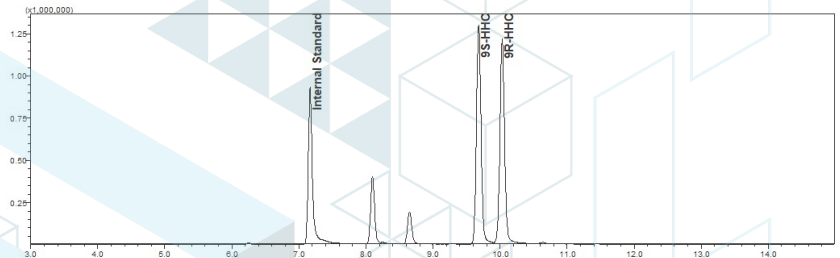
Sample ID: SA-11152021-5555  
Batch:  
Type: Finished Products  
Matrix: Concentrate - Distillate

Received: 11/15/2021  
Completed: 11/29/2021

**Client**  
Cake  
1007 West Grove Ave, Suite B  
Orange, CA 92865  
USA

### Cannabinoids by HPLC-PDA, LC-MS/MS, and/or GC-MS/MS

Analyte	LOD (%)	LOQ (%)	Result (%)	Result (mg/g)
(9R)-HHC			39.4	394.0
(9S)-HHC			49.0	490.0



ND = Not Detected; NT = Not Tested; LOD = Limit of Detection; LOQ = Limit of Quantitation; RL = Reporting Limit;  $\Delta$  = Delta; Total  $\Delta$ 9-THC =  $\Delta$ 9-THCA \* 0.877 +  $\Delta$ 9-THC; Total CBD = CBDA \* 0.877 + CBD;

COA Generated By: Senior Scientist,  
Scott Caudill  
Date: 11/29/2021

Tested By: Senior Scientist, Scott Caudill  
Date: 11/29/2021



This product or substance has been tested by KCA Laboratories using validated testing methodologies and an ISO/IEC 17025:2017 accredited quality system. Values reported relate only to the product or substance tested. The reported result is based on a sample weight. Unless otherwise stated, results of tests performed on all quality control samples met criteria for acceptance established by KCA Laboratories. KCA Laboratories makes no claims as to the efficacy, safety or other risks associated with any detected or non-detected amounts of any substances reported herein. This Certificate of Analysis shall not be reproduced except in full, without the written approval of KCA Laboratories. KCA Laboratories can provide measurement uncertainty upon request.

## Animal Cookies

Sample ID: SA-11152021-5551  
 Batch:  
 Type: Finished Products  
 Matrix: Concentrate - Distillate

Received: 11/15/2021  
 Completed: 11/29/2021

**Client**  
 Cake  
 1007 West Grove Ave, Suite B  
 Orange, CA 92865  
 USA



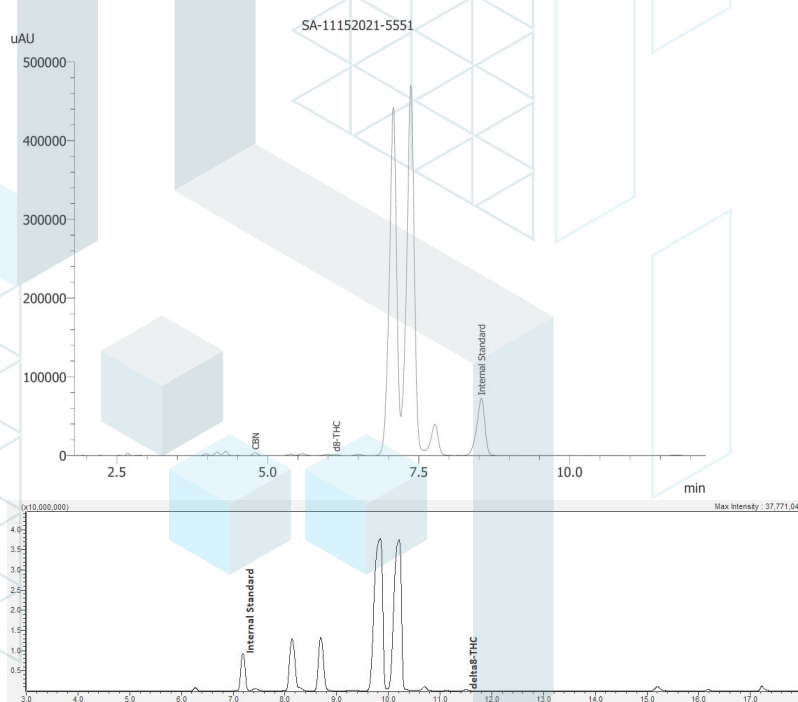
## Summary

Test	Date Tested	Status
Cannabinoids	11/29/2021	Tested
Cannabinoids (Additional)	11/29/2021	Tested

## Cannabinoids by HPLC-PDA and GC-MS/MS

<b>ND</b>	<b>0.290 %</b>	<b>0.404 %</b>	<b>Not Tested</b>	<b>Not Tested</b>	<b>Yes</b>
Total Δ9-THC	Δ8-THC	Total Cannabinoids	Moisture Content	Foreign Matter	Internal Marker Recovered

Analyte	LOD (%)	LOQ (%)	Result (%)	Result (mg/g)
CBC	0.0095	0.0284	ND	ND
CBCA	0.0181	0.0543	ND	ND
CBCV	0.006	0.018	ND	ND
CBD	0.0081	0.0242	ND	ND
CBDA	0.0043	0.013	ND	ND
CBDV	0.0061	0.0182	ND	ND
CBDVA	0.0021	0.0063	ND	ND
CBG	0.0057	0.0172	ND	ND
CBGA	0.0049	0.0147	ND	ND
CBL	0.0112	0.0335	ND	ND
CBLA	0.0124	0.0371	ND	ND
CBN	0.0056	0.0169	0.113	1.13
CBNA	0.006	0.0181	ND	ND
Δ8-THC	0.0104	0.0312	0.290	2.90
Δ9-THC	0.0076	0.0227	ND	ND
Δ9-THCA	0.0084	0.0251	ND	ND
Δ9-THCV	0.0069	0.0206	ND	ND
Δ9-THCVA	0.0062	0.0186	ND	ND
<b>Total Δ9-THC</b>			<b>ND</b>	<b>ND</b>
<b>Total CBD</b>			<b>ND</b>	<b>ND</b>
<b>Total</b>			<b>0.404</b>	<b>4.04</b>



ND = Not Detected; NT = Not Tested; LOD = Limit of Detection; LOQ = Limit of Quantitation; RL = Reporting Limit; Δ = Delta; Total Δ9-THC = Δ9-THCA \* 0.877 + Δ9-THC; Total CBD = CBDA \* 0.877 + CBD;

COA Generated By: Senior Scientist,  
 Scott Caudill  
 Date: 11/29/2021

Tested By: Senior Scientist, Scott Caudill  
 Date: 11/29/2021

This product or substance has been tested by KCA Laboratories using validated testing methodologies and an ISO/IEC 17025:2017 accredited quality system. Values reported relate only to the product or substance tested. The reported result is based on a sample weight. Unless otherwise stated, results of tests performed on all quality control samples met criteria for acceptance established by KCA Laboratories. KCA Laboratories makes no claims as to the efficacy, safety or other risks associated with any detected or non-detected amounts of any substances reported herein. This Certificate of Analysis shall not be reproduced except in full, without the written approval of KCA Laboratories. KCA Laboratories can provide measurement uncertainty upon request.





**KCA Laboratories**  
232 North Plaza Drive  
Nicholasville, KY 40356

+1-833-KCA-LABS  
<https://kcalabs.com>  
KDA Lic.# P\_0058

## Certificate of Analysis

2 of 2

### Animal Cookies

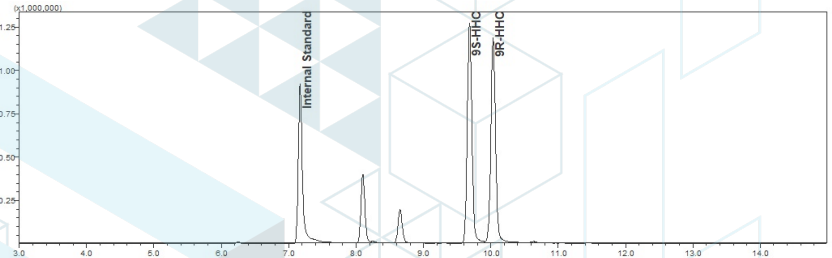
Sample ID: SA-11152021-5551  
Batch:  
Type: Finished Products  
Matrix: Concentrate - Distillate

Received: 11/15/2021  
Completed: 11/29/2021

**Client**  
Cake  
1007 West Grove Ave, Suite B  
Orange, CA 92865  
USA

### Cannabinoids by HPLC-PDA, LC-MS/MS, and/or GC-MS/MS

Analyte	LOD (%)	LOQ (%)	Result (%)	Result (mg/g)
(9R)-HHC			40.0	400.0
(9S)-HHC			49.9	499.0



ND = Not Detected; NT = Not Tested; LOD = Limit of Detection; LOQ = Limit of Quantitation; RL = Reporting Limit;  $\Delta$  = Delta; Total  $\Delta^9$ -THC =  $\Delta^9$ -THCA \* 0.877 +  $\Delta^9$ -THC; Total CBD = CBDA \* 0.877 + CBD;

COA Generated By: Senior Scientist,  
Scott Caudill  
Date: 11/29/2021

Tested By: Senior Scientist, Scott Caudill  
Date: 11/29/2021



This product or substance has been tested by KCA Laboratories using validated testing methodologies and an ISO/IEC 17025:2017 accredited quality system. Values reported relate only to the product or substance tested. The reported result is based on a sample weight. Unless otherwise stated, results of tests performed on all quality control samples met criteria for acceptance established by KCA Laboratories. KCA Laboratories makes no claims as to the efficacy, safety or other risks associated with any detected or non-detected amounts of any substances reported herein. This Certificate of Analysis shall not be reproduced except in full, without the written approval of KCA Laboratories. KCA Laboratories can provide measurement uncertainty upon request.

## Banana Runts

Sample ID: SA-11152021-5547  
 Batch:  
 Type: Finished Products  
 Matrix: Concentrate - Distillate

Received: 11/15/2021  
 Completed: 11/29/2021

**Client**  
 Cake  
 1007 West Grove Ave, Suite B  
 Orange, CA 92865  
 USA



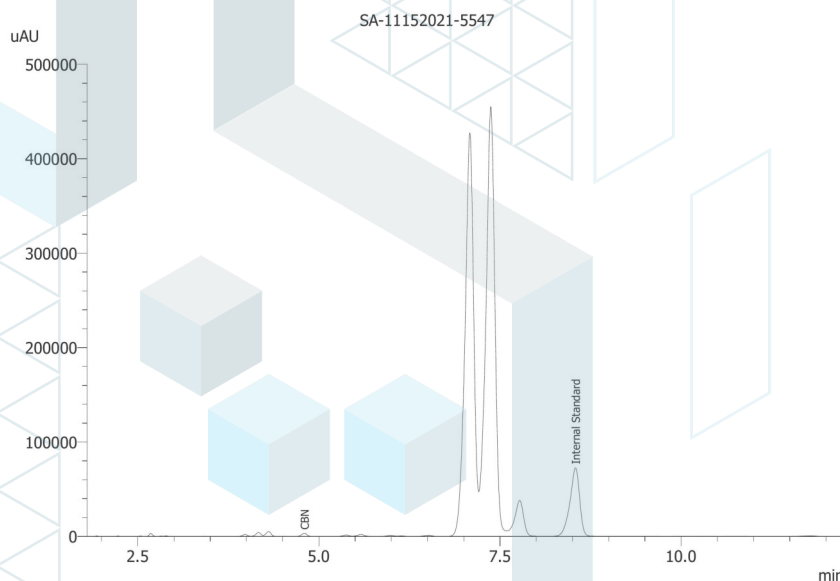
## Summary

Test	Date Tested	Status
Cannabinoids	11/29/2021	Tested
Cannabinoids (Additional)	11/29/2021	Tested

## Cannabinoids by HPLC-PDA

<b>ND</b>	<b>0.107 %</b>	<b>0.107 %</b>	<b>Not Tested</b>	<b>Not Tested</b>	<b>Yes</b>
Total Δ9-THC	CBN	Total Cannabinoids	Moisture Content	Foreign Matter	Internal Marker Recovered

Analyte	LOD (%)	LOQ (%)	Result (%)	Result (mg/g)
CBC	0.0095	0.0284	ND	ND
CBCA	0.0181	0.0543	ND	ND
CBCV	0.006	0.018	ND	ND
CBD	0.0081	0.0242	ND	ND
CBDA	0.0043	0.013	ND	ND
CBDV	0.0061	0.0182	ND	ND
CBDVA	0.0021	0.0063	ND	ND
CBG	0.0057	0.0172	ND	ND
CBGA	0.0049	0.0147	ND	ND
CBL	0.0112	0.0335	ND	ND
CBLA	0.0124	0.0371	ND	ND
CBN	0.0056	0.0169	0.107	1.07
CBNA	0.006	0.0181	ND	ND
Δ8-THC	0.0104	0.0312	ND	ND
Δ9-THC	0.0076	0.0227	ND	ND
Δ9-THCA	0.0084	0.0251	ND	ND
Δ9-THCV	0.0069	0.0206	ND	ND
Δ9-THCVA	0.0062	0.0186	ND	ND
<b>Total Δ9-THC</b>			<b>ND</b>	<b>ND</b>
<b>Total CBD</b>			<b>ND</b>	<b>ND</b>
<b>Total</b>			<b>0.107</b>	<b>1.07</b>



ND = Not Detected; NT = Not Tested; LOD = Limit of Detection; LOQ = Limit of Quantitation; RL = Reporting Limit; Δ = Delta; Total Δ9-THC = Δ9-THCA \* 0.877 + Δ9-THC; Total CBD = CBDA \* 0.877 + CBD;

*Scott Caudill*  
 COA Generated By: Senior Scientist,  
 Scott Caudill  
 Date: 11/29/2021

*Scott Caudill*  
 Tested By: Senior Scientist, Scott Caudill  
 Date: 11/29/2021



ISO/IEC 17025:2017 Accredited  
 Accreditation #108651



## Banana Runts

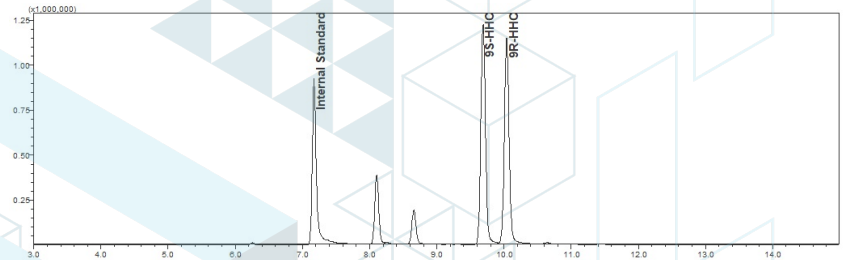
Sample ID: SA-11152021-5547  
 Batch:  
 Type: Finished Products  
 Matrix: Concentrate - Distillate

Received: 11/15/2021  
 Completed: 11/29/2021

**Client**  
 Cake  
 1007 West Grove Ave, Suite B  
 Orange, CA 92865  
 USA

## Cannabinoids by HPLC-PDA, LC-MS/MS, and/or GC-MS/MS

Analyte	LOD (%)	LOQ (%)	Result (%)	Result (mg/g)
(9R)-HHC			40.3	403.0
(9S)-HHC			50.2	502.0



ND = Not Detected; NT = Not Tested; LOD = Limit of Detection; LOQ = Limit of Quantitation; RL = Reporting Limit; Δ = Delta; Total Δ9-THC = Δ9-THCA \* 0.877 + Δ9-THC; Total CBD = CBDA \* 0.877 + CBD;

COA Generated By: Senior Scientist,  
 Scott Caudill  
 Date: 11/29/2021

Tested By: Senior Scientist, Scott Caudill  
 Date: 11/29/2021

This product or substance has been tested by KCA Laboratories using validated testing methodologies and an ISO/IEC 17025:2017 accredited quality system. Values reported relate only to the product or substance tested. The reported result is based on a sample weight. Unless otherwise stated, results of tests performed on all quality control samples met criteria for acceptance established by KCA Laboratories. KCA Laboratories makes no claims as to the efficacy, safety or other risks associated with any detected or non-detected amounts of any substances reported herein. This Certificate of Analysis shall not be reproduced except in full, without the written approval of KCA Laboratories. KCA Laboratories can provide measurement uncertainty upon request.





## Black Sherbet

Sample ID: SA-11152021-5546  
 Batch:  
 Type: Finished Products  
 Matrix: Concentrate - Distillate

Received: 11/15/2021  
 Completed: 11/29/2021

**Client**  
 Cake  
 1007 West Grove Ave, Suite B  
 Orange, CA 92865  
 USA



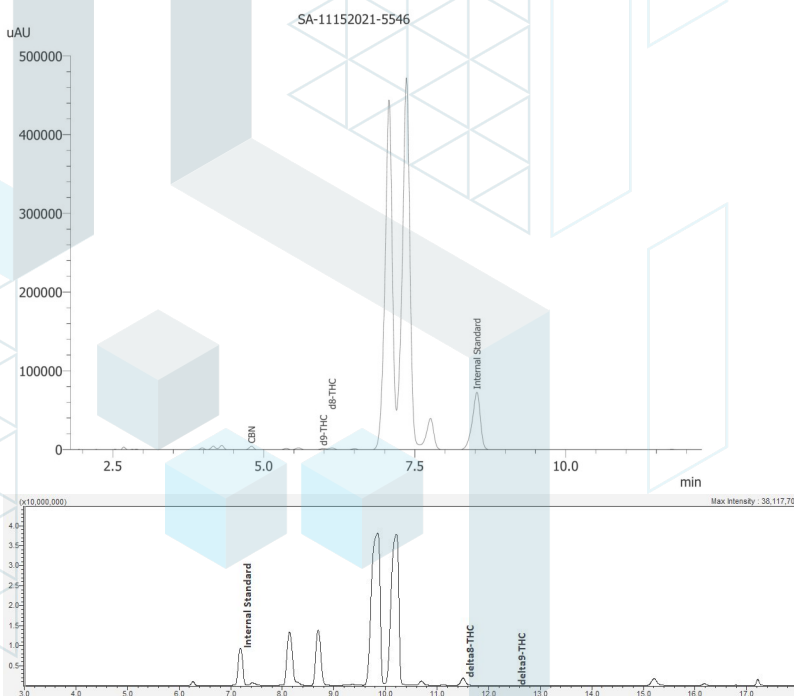
## Summary

Test	Date Tested	Status
Cannabinoids	11/29/2021	Tested
Cannabinoids (Additional)	11/29/2021	Tested

## Cannabinoids by HPLC-PDA and GC-MS/MS

<b>0.0257 %</b>	<b>0.381 %</b>	<b>0.541 %</b>	<b>Not Tested</b>	<b>Not Tested</b>	<b>Yes</b>
Total Δ9-THC	Δ8-THC	Total Cannabinoids	Moisture Content	Foreign Matter	Internal Marker Recovered

Analyte	LOD (%)	LOQ (%)	Result (%)	Result (mg/g)
CBC	0.0095	0.0284	ND	ND
CBCA	0.0181	0.0543	ND	ND
CBCV	0.006	0.018	ND	ND
CBD	0.0081	0.0242	ND	ND
CBDA	0.0043	0.013	ND	ND
CBDV	0.0061	0.0182	ND	ND
CBDVA	0.0021	0.0063	ND	ND
CBG	0.0057	0.0172	ND	ND
CBGA	0.0049	0.0147	ND	ND
CBL	0.0112	0.0335	ND	ND
CBLA	0.0124	0.0371	ND	ND
CBN	0.0056	0.0169	0.134	1.34
CBNA	0.006	0.0181	ND	ND
Δ8-THC	0.0104	0.0312	0.381	3.81
Δ9-THC	0.0076	0.0227	0.0257	0.257
Δ9-THCA	0.0084	0.0251	ND	ND
Δ9-THCV	0.0069	0.0206	ND	ND
Δ9-THCVA	0.0062	0.0186	ND	ND
<b>Total Δ9-THC</b>			<b>0.0257</b>	<b>0.257</b>
<b>Total CBD</b>			<b>ND</b>	<b>ND</b>
<b>Total</b>			<b>0.541</b>	<b>5.41</b>



ND = Not Detected; NT = Not Tested; LOD = Limit of Detection; LOQ = Limit of Quantitation; RL = Reporting Limit; Δ = Delta; Total Δ9-THC = Δ9-THCA \* 0.877 + Δ9-THC; Total CBD = CBDA \* 0.877 + CBD;




COA Generated By: Senior Scientist,  
 Scott Caudill  
 Date: 11/29/2021

Tested By: Senior Scientist, Scott Caudill  
 Date: 11/29/2021



This product or substance has been tested by KCA Laboratories using validated testing methodologies and an ISO/IEC 17025:2017 accredited quality system. Values reported relate only to the product or substance tested. The reported result is based on a sample weight. Unless otherwise stated, results of tests performed on all quality control samples met criteria for acceptance established by KCA Laboratories. KCA Laboratories makes no claims as to the efficacy, safety or other risks associated with any detected or non-detected amounts of any substances reported herein. This Certificate of Analysis shall not be reproduced except in full, without the written approval of KCA Laboratories. KCA Laboratories can provide measurement uncertainty upon request.



**KCA Laboratories**  
232 North Plaza Drive  
Nicholasville, KY 40356

+1-833-KCA-LABS  
<https://kcalabs.com>  
KDA Lic.# P\_0058

## Certificate of Analysis

2 of 2

### Black Sherbet

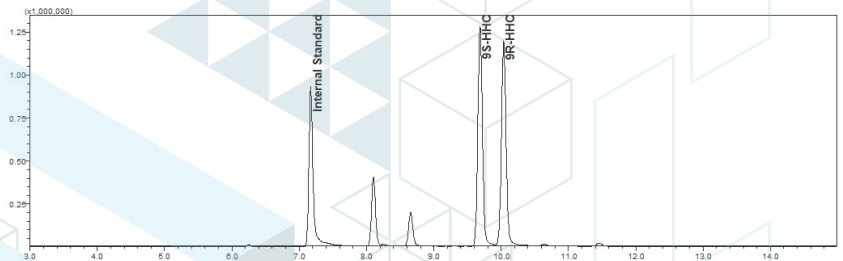
Sample ID: SA-11152021-5546  
Batch:  
Type: Finished Products  
Matrix: Concentrate - Distillate

Received: 11/15/2021  
Completed: 11/29/2021

**Client**  
Cake  
1007 West Grove Ave, Suite B  
Orange, CA 92865  
USA

### Cannabinoids by HPLC-PDA, LC-MS/MS, and/or GC-MS/MS

Analyte	LOD (%)	LOQ (%)	Result (%)	Result (mg/g)
(9R)-HHC			42.1	421.0
(9S)-HHC			52.7	527.0



ND = Not Detected; NT = Not Tested; LOD = Limit of Detection; LOQ = Limit of Quantitation; RL = Reporting Limit; Δ = Delta; Total Δ9-THC = Δ9-THCA \* 0.877 + Δ9-THC; Total CBD = CBDA \* 0.877 + CBD;

COA Generated By: Senior Scientist,  
Scott Caudill  
Date: 11/29/2021

Tested By: Senior Scientist, Scott Caudill  
Date: 11/29/2021



This product or substance has been tested by KCA Laboratories using validated testing methodologies and an ISO/IEC 17025:2017 accredited quality system. Values reported relate only to the product or substance tested. The reported result is based on a sample weight. Unless otherwise stated, results of tests performed on all quality control samples met criteria for acceptance established by KCA Laboratories. KCA Laboratories makes no claims as to the efficacy, safety or other risks associated with any detected or non-detected amounts of any substances reported herein. This Certificate of Analysis shall not be reproduced except in full, without the written approval of KCA Laboratories. KCA Laboratories can provide measurement uncertainty upon request.

## Blood Orange

Sample ID: SA-11152021-5548  
 Batch:  
 Type: Finished Products  
 Matrix: Concentrate - Distillate

Received: 11/15/2021  
 Completed: 11/29/2021

**Client**  
 Cake  
 1007 West Grove Ave, Suite B  
 Orange, CA 92865  
 USA



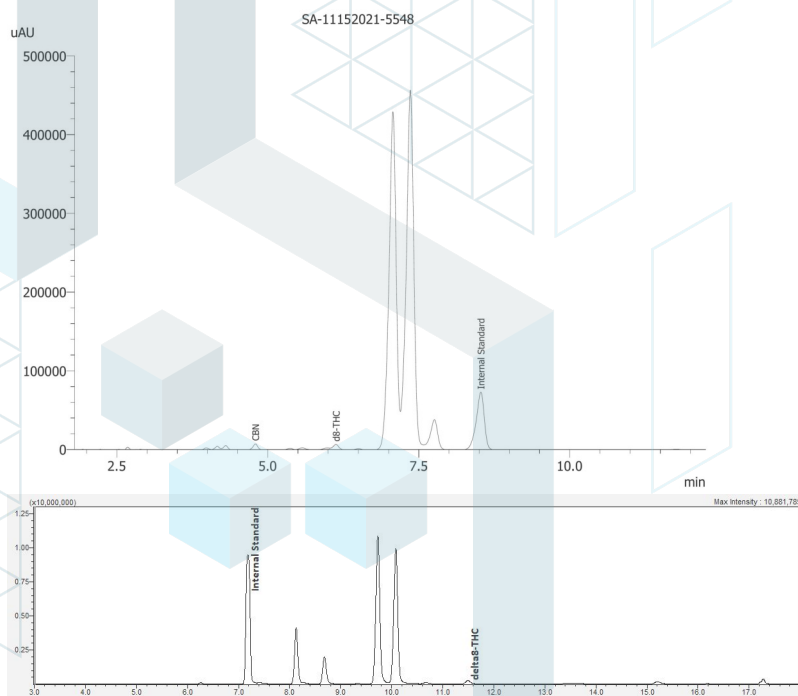
## Summary

Test	Date Tested	Status
Cannabinoids	11/29/2021	Tested
Cannabinoids (Additional)	11/29/2021	Tested

## Cannabinoids by HPLC-PDA and GC-MS/MS

<b>ND</b>	<b>0.286 %</b>	<b>0.513 %</b>	<b>Not Tested</b>	<b>Not Tested</b>	<b>Yes</b>
Total Δ9-THC	Δ8-THC	Total Cannabinoids	Moisture Content	Foreign Matter	Internal Marker Recovered

Analyte	LOD (%)	LOQ (%)	Result (%)	Result (mg/g)
CBC	0.0095	0.0284	ND	ND
CBCA	0.0181	0.0543	ND	ND
CBCV	0.006	0.018	ND	ND
CBD	0.0081	0.0242	ND	ND
CBDA	0.0043	0.013	ND	ND
CBDV	0.0061	0.0182	ND	ND
CBDVA	0.0021	0.0063	ND	ND
CBG	0.0057	0.0172	ND	ND
CBGA	0.0049	0.0147	ND	ND
CBL	0.0112	0.0335	ND	ND
CBLA	0.0124	0.0371	ND	ND
CBN	0.0056	0.0169	0.227	2.27
CBNA	0.006	0.0181	ND	ND
Δ8-THC	0.0104	0.0312	0.286	2.86
Δ9-THC	0.0076	0.0227	ND	ND
Δ9-THCA	0.0084	0.0251	ND	ND
Δ9-THCV	0.0069	0.0206	ND	ND
Δ9-THCVA	0.0062	0.0186	ND	ND
<b>Total Δ9-THC</b>			<b>ND</b>	<b>ND</b>
<b>Total CBD</b>			<b>ND</b>	<b>ND</b>
<b>Total</b>			<b>0.513</b>	<b>5.13</b>



ND = Not Detected; NT = Not Tested; LOD = Limit of Detection; LOQ = Limit of Quantitation; RL = Reporting Limit; Δ = Delta; Total Δ9-THC = Δ9-THCA \* 0.877 + Δ9-THC; Total CBD = CBDA \* 0.877 + CBD;

COA Generated By: Senior Scientist,  
 Scott Caudill  
 Date: 11/29/2021

Tested By: Senior Scientist, Scott Caudill  
 Date: 11/29/2021

This product or substance has been tested by KCA Laboratories using validated testing methodologies and an ISO/IEC 17025:2017 accredited quality system. Values reported relate only to the product or substance tested. The reported result is based on a sample weight. Unless otherwise stated, results of tests performed on all quality control samples met criteria for acceptance established by KCA Laboratories. KCA Laboratories makes no claims as to the efficacy, safety or other risks associated with any detected or non-detected amounts of any substances reported herein. This Certificate of Analysis shall not be reproduced except in full, without the written approval of KCA Laboratories. KCA Laboratories can provide measurement uncertainty upon request.





**KCA Laboratories**  
232 North Plaza Drive  
Nicholasville, KY 40356

+1-833-KCA-LABS  
<https://kcalabs.com>  
KDA Lic.# P\_0058

## Certificate of Analysis

2 of 2

### Blood Orange

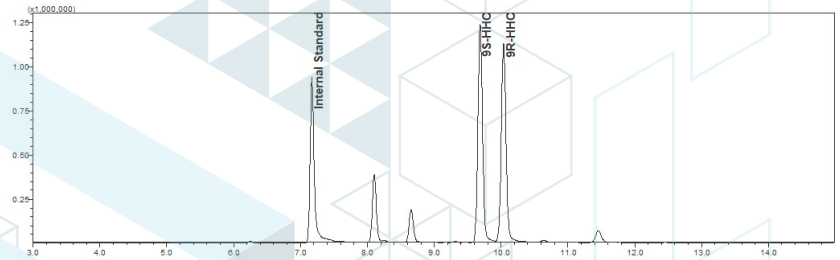
Sample ID: SA-11152021-5548  
Batch:  
Type: Finished Products  
Matrix: Concentrate - Distillate

Received: 11/15/2021  
Completed: 11/29/2021

**Client**  
Cake  
1007 West Grove Ave, Suite B  
Orange, CA 92865  
USA

### Cannabinoids by HPLC-PDA, LC-MS/MS, and/or GC-MS/MS

Analyte	LOD (%)	LOQ (%)	Result (%)	Result (mg/g)
(9R)-HHC			40.5	405.0
(9S)-HHC			50.8	508.0



ND = Not Detected; NT = Not Tested; LOD = Limit of Detection; LOQ = Limit of Quantitation; RL = Reporting Limit;  $\Delta$  = Delta; Total  $\Delta$ 9-THC =  $\Delta$ 9-THCA \* 0.877 +  $\Delta$ 9-THC; Total CBD = CBDA \* 0.877 + CBD;

COA Generated By: Senior Scientist,  
Scott Caudill  
Date: 11/29/2021

Tested By: Senior Scientist, Scott Caudill  
Date: 11/29/2021



This product or substance has been tested by KCA Laboratories using validated testing methodologies and an ISO/IEC 17025:2017 accredited quality system. Values reported relate only to the product or substance tested. The reported result is based on a sample weight. Unless otherwise stated, results of tests performed on all quality control samples met criteria for acceptance established by KCA Laboratories. KCA Laboratories makes no claims as to the efficacy, safety or other risks associated with any detected or non-detected amounts of any substances reported herein. This Certificate of Analysis shall not be reproduced except in full, without the written approval of KCA Laboratories. KCA Laboratories can provide measurement uncertainty upon request.