



Customer: Discover Health LLC
Address: 3269 S Academy Blvd
Colorado Springs, CO 80916
Sample ID: 900mg Full Spectrum TIN-1134
Matrix: Tincture
Labnumber: 24A0170-01

Total mass or volume per unit (g or mL): 60

Density (g/mL): 1.2740

Cannabinoid Profile

Test Conditions: 20°C

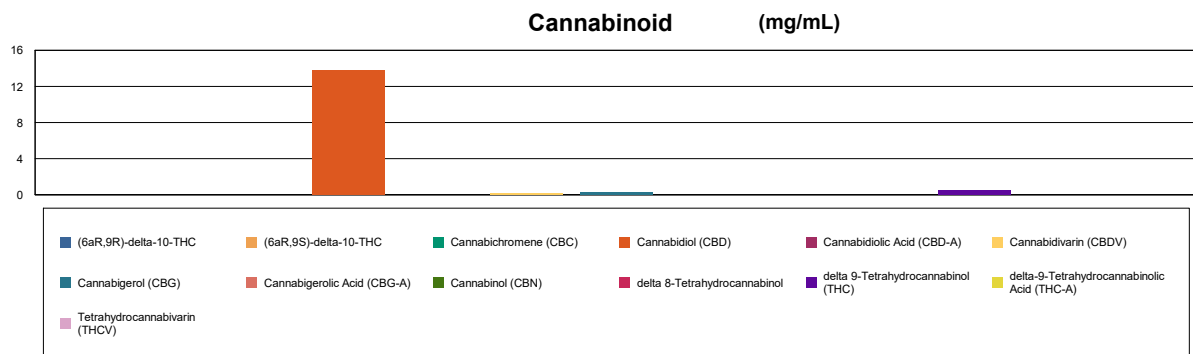
Extraction Technician: SH

Analytical Chemist: SH

Extraction Date(s)	Analysis Date(s)
1/29/2024	1/29/2024

Test Method: Cannabinoid Potency by HPLC		Results		
	LOD (mg/mL)	%	mg/mL	mg/Bottle
Cannabidivarin (CBDV)		0.02	0.176	10.5
Cannabidiolic Acid (CBD-A)	<0.10			
Cannabigerolic Acid (CBG-A)	<0.10			
Cannabigerol (CBG)		0.03	0.268	16.1
Cannabidiol (CBD)		1.39	13.9	832
Tetrahydrocannabivarin (THCV)	<0.10			
Cannabinol (CBN)	<0.10			
Cannabichromene (CBC)	<0.10			
delta 9-Tetrahydrocannabinol (THC)		0.04	0.445	26.7
delta-9-Tetrahydrocannabinolic Acid (THC-A)	<0.30			
delta 8-Tetrahydrocannabinol	<0.30			
(6aR,9S)-delta-10-THC	<0.30			
(6aR,9R)-delta-10-THC	<0.30			
Cannabinoids Total		%	mg/mL	
Max Active THC (delta-9-tetrahydrocannabinol)		0.04	0.45	
Max Active CBD		1.39	13.90	
Total Cannabinoids		1.48	14.80	

Following USDA guidelines on uncertainty, Altitude Consulting's uncertainty is calculated to be +/- 5% for all cannabinoids using a coverage factor of 2 (95% confidence interval). Measurement uncertainty has not been factored into reported values. Blank results indicate the compound was below the limit of detection.



END OF REPORT

END OF REPORT

Gary Brook - Laboratory Director - 1/30/2024

Reporting Limits will vary based on sample extraction weight used for the analysis.

The results of this report are based solely on the sample submitted and cannot be reproduced. Decision Rule: Measurement uncertainty is not accounted for in the reported values.

Results are based solely on calculated numbers. Altitude Consulting makes no Statements of conformity. **Pesticide, metal, and microbial analyses are subcontracted to ISO 17025 laboratories.**