

Customer: Discover CBD
Address: 2255 Reliable Cir
Colorado Springs, CO 80906
Sample ID: TIN-1125 900mg Berry WS
Matrix: Tincture
Labnumber: 22L0108-02

Density (g/mL): 1.2392

Cannabinoid Profile

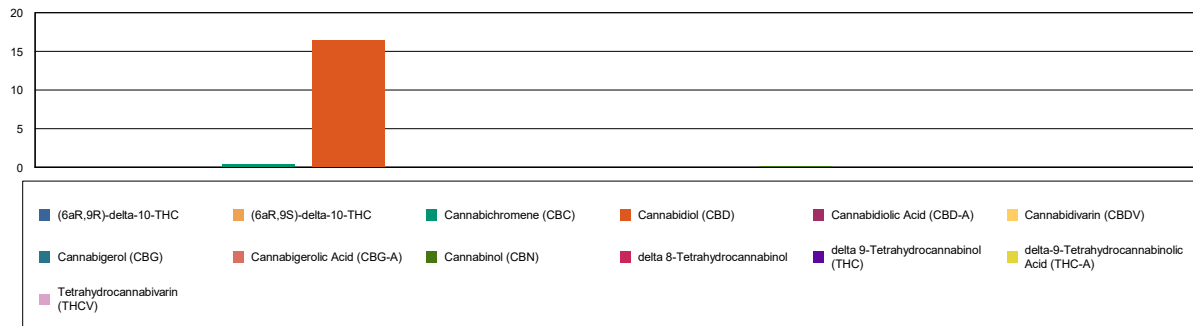
Test Conditions: 16°C
Extraction Technician: SH
Analytical Chemist: SH

Extraction Date(s)	Analysis Date(s)
12/27/2022	12/29/2022

Cannabinoids (HPLC)	Results		
	LOD (mg/mL)	%	mg/mL
Cannabidivarin (CBDV)	<0.20		
Cannabidiolic Acid (CBD-A)	<0.20		
Cannabigerolic Acid (CBG-A)	<0.20		
Cannabigerol (CBG)	<0.20		
Cannabidiol (CBD)		1.64	16.4
Tetrahydrocannabivarin (THCV)	<0.20		
Cannabinol (CBN)		0.02	0.152
Cannabichromene (CBC)		0.04	0.376
delta 9-Tetrahydrocannabinol (THC)	<0.40		
delta-9-Tetrahydrocannabinolic Acid (THC-A)	<0.40		
delta 8-Tetrahydrocannabinol	<0.40		
(6aR,9S)-delta-10-THC	<0.40		
(6aR,9R)-delta-10-THC	<0.40		
Cannabinoids Total		%	mg/mL
Max Active THC (delta-9-tetrahydrocannabinol)		<0.04	<0.40
Max Active CBD		1.64	16.40
Total Cannabinoids		1.69	16.90

Following USDA guidelines on uncertainty, Altitude Consulting's uncertainty is calculated to be +/- 3% for all cannabinoids using a coverage factor of 2 (95% confidence interval). Measurement uncertainty has not been factored into reported values. Blank results indicate the compound was below the limit of detection.

Cannabinoid (mg/mL)



Gary Brook - Laboratory Director - 12/29/2022

Reporting Limits will vary based on sample extraction weight used for the analysis.

The results of this report are based solely on the sample submitted and cannot be reproduced. Decision Rule: Measurement uncertainty is not accounted for in the reported values. Results are based solely on calculated numbers. Altitude Consulting makes no Statements of conformity. Pesticide, metal, and microbial analyses are subcontracted to ISO 17025 laboratories.