



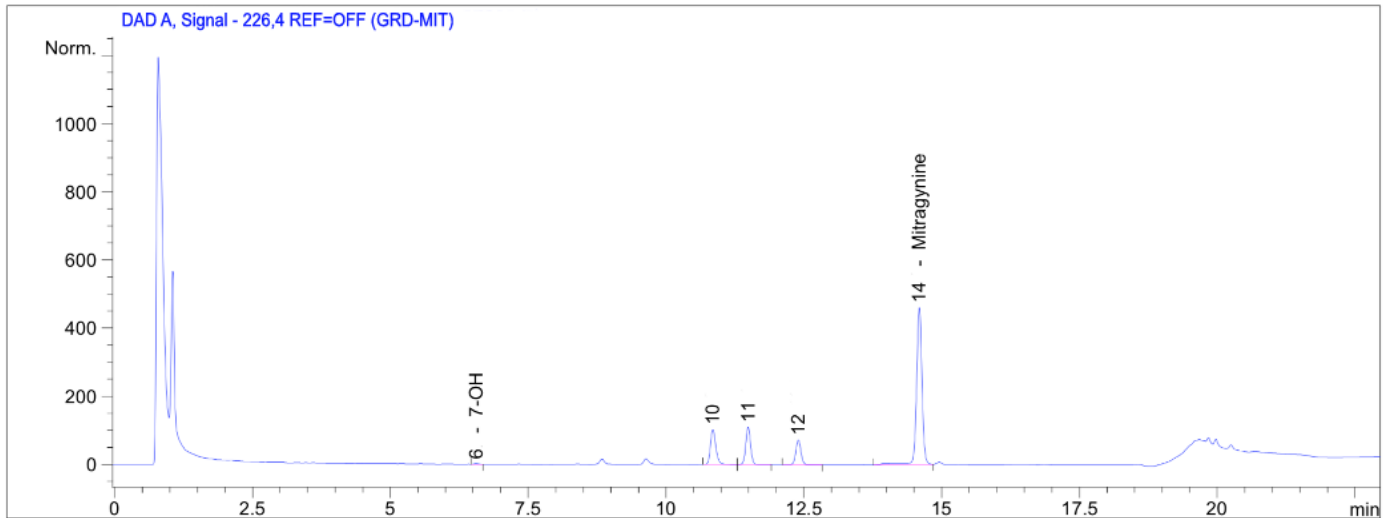
Certificate of Analysis

09 MAY 2024

TRAIN WRECK POWDER / MIT / 100118



CLIENT:	MODUS ENTERPRISES	SAMPLE SET:	179860
Sample Type:	Powder	Date Acquired:	05/07/2024
Sample Weight:	200mg	Acquisition Method:	MIT-EVO_R2024-01
Dilution:	1.0	Testing ID:	179860_0001.D
Vial:	Vial 1	Date Processed:	05/08/2024
Injection Volume:	5.0 µl	Run Time:	27 min
Prepped By:	Sarah T.	Calibration ID:	20240105



#	Analyte	RT (min)	Area (mAU*s)	Amt (µg/mL)	Alkaloid	Total %
1	Mitragynine	14	2799	141	C ₂₃ H ₃₀ N ₂ O ₄	1.41
2	7-Hydroxymitragynine	6	7	0.7	C ₂₃ H ₃₀ N ₂ O ₅	0.007
3	Paynantheine	10	660	32	C ₂₃ H ₂₈ N ₂ O ₄	0.32
4	Speciogynine	11	898	44	C ₂₃ H ₃₀ N ₂ O ₄	0.44
5	Speciociliatine	12	538	26	C ₂₃ H ₃₀ N ₂ O ₄	0.26
6						

Mitragynine Content: **14 mg/g**

Adulterants (Y/N): **None Detected**

Identity Confirmed: **YES**

SEAL OF AUTHENTICITY

VERIFIED BY: *[Signature]*

Quality Assurance: *[Signature]*