



Yumz Lab  
www.yumzlab.com

Sample 698-102824-015

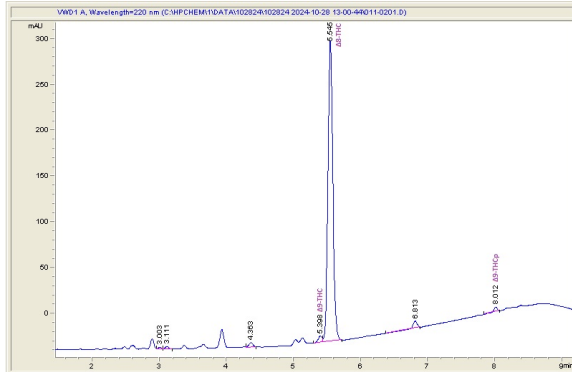
Yumz - Bubblegum Kush

Sample Submitted: 10-28-2024; Report Date: 11-04-2024

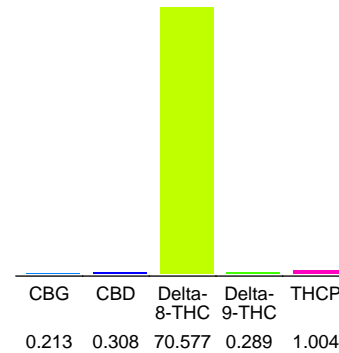
## Yumz - Bubblegum Kush

Extract / Concentrate

### Chromatogram



### Cannabinoid Profile



### Cannabinoid Profile by HPLC

**0.29%**

Delta-9-THC

**0.31%**

CBD

**72.39%**

Total Cannabinoids

Cannabinoid	% wt	mg/g
CBG	0.213	2.13
CBD	0.308	3.08
Delta-8-THC	70.58	705.77
Delta-9-THC	0.289	2.89
THCP	1.004	10.04
<b>Total Cannabinoids</b>	<b>72.39</b>	<b>723.9</b>
<b>Calculated Total THC</b>	<b>0.29</b>	<b>2.89</b>
<b>Calculated CBD Yield</b>	<b>0.31</b>	<b>3.08</b>

Calculated Total THC = Delta-9-THC + 0.877 \* THCA  
Calculated Maximum CBD Yield = CBD + 0.877 \* CBDA

**Marin Analytics, LLC**

250 Bel Marin Keys Blvd, Suite D4  
Novato, CA 94949

833-321-TEST / info@marinanalytics.com

**Mike Clemmons**  
Lab Manager