



Certificate of Analysis
Compliance Test

Client Information:

Honest PP&D
1038 Arlington St
Orlando, Florida 32805

Batch # GGV-0001
Batch Date: 2023-08-10
Extracted From: HEMP

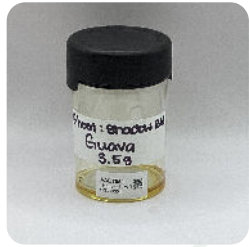
Test Reg State: Florida

Order # HON230810-10001
Order Date: 2023-08-10
Sample # AAET551

Sampling Date: 2023-08-14
Lab Batch Date: 2023-08-14
Completion Date: 2023-08-20

Initial Gross Weight: 34.316 g

Number of Units: 1
Net Weight per Unit: 3.500 g



Product Image

Potency
Tested

Delta 8/Delta 10 Potency 13 - (LCUV)
Specimen Weight: 101.980 mg

Tested
SOP13.052 (LCUV)

Analyte	LOD (%)	LOQ (%)	Result (mg/g)	Result (%)
Delta-8 THC	2.60E-5	0.015	592.320	59.232
Delta6a10a-THC	8.47E-5	0.015	54.390	5.439
Delta-10 THC	3.00E-6	0.015	18.970	1.897
CBN	1.40E-5	0.015	5.710	0.571
CBDV	6.50E-5	0.015	3.420	0.342
CBC	1.80E-5	0.015	1.810	0.181
THCA-A	3.20E-5	0.015	1.680	0.168
CBD	5.40E-5	0.015	0.520	0.052
CBDA	1.00E-5	0.015	<LOQ	<LOQ
CBG	2.48E-4	0.015	<LOQ	<LOQ
CBGA	8.00E-5	0.015	<LOQ	<LOQ
Delta-9 THC	1.30E-5	0.015	<LOQ	<LOQ
THCV	7.00E-6	0.015	<LOQ	<LOQ
Total Active CBD			0.520	0.052
Total Active THC			1.473	0.147

Potency Summary

Total Delta 8 59.232% 2,073.120	Total Delta 10 1.897% 66.400mg
Total Active THC 0.147% 5.160mg	Total Active CBD 0.052% 1.820mg
Total CBG - None Detected	Total CBN 0.571% 19.990mg
Other Cannabinoids 5.962% 208.67mg	Total Cannabinoids 67.861% 2,375.140

Aixia Sun Lab Director/Principal Scientist
D.H.Sc., M.Sc., B.Sc., MT (AAB)



Definitions and Abbreviations used in this report: Total Active CBD = CBD + (CBD-A * 0.877), *Total CBDV = CBDV + (CBDVA * 0.87), Total Active THC = THCA-A * 0.877 + Delta 9 THC, Total THC = THCV + (THCVA * 0.87), CBG Total = (CBGA * 0.877) + CBG, CBN Total = (CBNA * 0.877) + CBN, Total CBC = CBC + (CBCA * 0.877), Total THC-O-Acetate = Delta 8 THC-O-Acetate + Delta 9 THC-O-Acetate, Total THCP = Delta8-THCP + Delta9-THCP, Other Cannabinoids Total = Total Cannabinoids - All the listed cannabinoids on the summary section, Total Detected Cannabinoids = Delta6a10a-THC + Delta8-THC + Total CBN + CBT + CBE + Delta8-THCV + Total CBG + Total CBD + Total THCV + CBL + Total THC + Total CBC + Total CBDV + Delta10-THC + Total THC-O-Acetate + Total THCP. (mg/ml) = Milligrams per Milliliter, LOQ = Limit of Quantitation, LOD = Limit of Detection, Dilution = Dilution Factor (ppb) = Parts per Billion, (%) = Percent, (cfu/g) = Colony Forming Unit per Gram (cfu/g) = Colony Forming Unit per Gram, LOD = Limit of Detection, (µg/g) = Microgram per Gram (ppm) = Parts per Million, (ppm) = (µg/g), (aw) = Water Activity, (mg/Kg) = Milligram per Kilogram, ACS uses simple acceptance criteria. Passed - Analyte/microbe is not detected or is at the level below the action limit per FL rule 64ER20-39, 5K-4.036, 5K-4.034. Failed - Analyte/microbe is at the level that equal or above the action limit per FL rule 64ER20-39, 5K-4.036, 5K-4.034 Sample not received via laboratory sampling.

This report shall not be reproduced, without written approval, from ACS Laboratory. The results of this report relate only to the material or product analyzed. Test results are confidential unless explicitly waived otherwise. ACS Laboratory is accredited to the ISO/IEC 17025:2017 Standard.